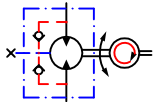


Tolerance for basic dimensions = ±1 mm (0.04 inch)

- C: Drain connection
- G 1/4; 12[0.47] deep
- D: G 1/2; 15[0.59] deep
- E: M8; 13[0.51] deep (4)
- F: Speed sensor not assembled



Scale	Projection	SAUER DANFOSS	OMP 32 EM
Date	2005.08.10		
Design	EJ	with cyl. ø25 shaft	
Appr.		A2 flange, sideport	
No.		8_151-6874_7	

Responsible: Product Engineering (Responsible) / S. Remond, that he is bound and its quality and reliability. The product is not to be used for any other purpose than the one intended. Sauer-Danfoss (Responsible) / S. Remond reserves the right to alter product design or provide that such alterations can be made without any notice. Sauer-Danfoss (Responsible) / S. Remond reserves the right to alter product design or provide that such alterations can be made without any notice.