



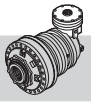
# RR6500

IT EN DE FR ES PT

RR6500 L.. .. **i**



i	T <sub>2</sub> [Nm]						n <sub>1max</sub> [min <sup>-1</sup> ]	T <sub>2max</sub> [Nm]	P <sub>t</sub> [kW]	
	n <sub>2</sub> x h									
1/...	10000 (10 <sup>4</sup> )	25000 (2.5 · 10 <sup>4</sup> )	50000 (5 · 10 <sup>4</sup> )	100000 (10 <sup>5</sup> )	500000 (5 · 10 <sup>5</sup> )	1000000 (10 <sup>6</sup> )				
<b>RR6500 L1</b>	<b>4.17</b>	81040	74890	72940	67640	42750	34720	1000	125000	73
	<b>4.84</b>	73730	67450	60460	57370	42020	34130	1000	125000	73
	<b>5.87</b>	62830	53090	47640	45650	41170	33440	1000	125000	73
<b>RR6500 L2</b>	<b>16.70</b>	81040	74890	72940	67640	42750	34720	2000	125000	44
	<b>19.64</b>	81040	74890	72940	67640	42750	34720	2000	125000	44
	<b>22.79</b>	73730	67450	60460	57370	42020	34130	2000	125000	44
	<b>28.31</b>	70340	66490	60460	57370	42020	34130	2000	125000	44
	<b>34.30</b>	62830	53090	47640	45650	41170	33440	2000	125000	44
<b>RR6500 L3</b>	<b>65.50</b>	81040	74890	72940	67640	42750	34720	3000	125000	32
	<b>71.86</b>	81040	74890	72940	67640	42750	34720	3000	125000	32
	<b>77.06</b>	81040	74890	72940	67640	42750	34720	3000	125000	32
	<b>84.55</b>	81040	74890	72940	67640	42750	34720	3000	125000	32
	<b>91.34</b>	81040	74890	72940	67640	42750	34720	3000	125000	32
	<b>107.45</b>	81040	74890	72940	67640	42750	34720	3000	125000	32
	<b>126.27</b>	75440	71330	68360	65520	42750	34720	3000	125000	32
	<b>154.86</b>	70340	66490	60460	57370	42020	34130	3000	125000	32
	<b>181.98</b>	70340	66490	60460	57370	42020	34130	3000	125000	32
	<b>223.89</b>	69790	65980	60460	57370	42020	34130	3000	125000	32
	<b>271.26</b>	62830	53090	47640	45650	41170	33440	3000	125000	32
	<b>294.96</b>	62830	53090	47640	45650	41170	33440	3000	125000	32
	<b>RR6500 L4</b>	<b>222.69</b>	81040	74890	72940	67640	42750	34720	3500	125000
<b>261.99</b>		81040	74890	72940	67640	42750	34720	3500	125000	25
<b>310.54</b>		81040	74890	72940	67640	42750	34720	3500	125000	25
<b>365.34</b>		81040	74890	72940	67640	42750	34720	3500	125000	25
<b>416.81</b>		81040	74890	72940	67640	42750	34720	3500	125000	25
<b>456.68</b>		81040	74890	72940	67640	42750	34720	3500	125000	25
<b>529.74</b>		81040	74890	72940	67640	42750	34720	3500	125000	25
<b>623.23</b>		81040	74890	72940	67640	42750	34720	3500	125000	25
<b>752.17</b>		81040	74890	72940	67640	42750	34720	3500	125000	25
<b>883.89</b>		75440	71330	68360	65520	42750	34720	3500	125000	25
<b>1025.39</b>		73730	67450	60460	57370	42020	34130	3500	125000	25
<b>1119.44</b>		69790	65980	60460	57370	42020	34130	3500	125000	25
<b>1298.55</b>		69790	65980	60460	57370	42020	34130	3500	125000	25
<b>1567.22</b>		69790	65980	60460	57370	42020	34130	3500	125000	25
<b>1898.83</b>		62830	53090	47640	45650	41170	33440	3500	125000	25
<b>2064.71</b>		62830	53090	47640	45650	41170	33440	3500	125000	25



RR6500

A..

..

i



i	T <sub>2</sub> [Nm]						n <sub>1max</sub> [min <sup>-1</sup> ]	T <sub>2max</sub> [Nm]	P <sub>t</sub> [kW]
	n <sub>2</sub> x h								
1/...	10000 (10 <sup>4</sup> )	25000 (2.5 · 10 <sup>4</sup> )	50000 (5 · 10 <sup>4</sup> )	100000 (10 <sup>5</sup> )	500000 (5 · 10 <sup>5</sup> )	1000000 (10 <sup>6</sup> )			

**RR6500 A2**

<b>10.27</b>	66830	65380	53100	43130	26620	21620	2000	81010	64
<b>11.92</b>	73730	67450	58920	47860	29530	23990	2000	93950	64
<b>14.44</b>	62830	53090	47640	45650	33780	27440	2000	113820	64
<b>15.33</b>	59680	59680	58870	47820	29500	23970	2000	93960	64
<b>18.58</b>	62830	53090	47640	45650	33750	27410	2000	113860	64
<b>22.40</b>	61480	53090	47640	45650	33310	27060	2000	113840	64

**RR6500 A3 (A)**

<b>45.53</b>	81040	66870	54320	44120	27220	22110	2500	125000	39
<b>53.57</b>	81040	74890	60860	49440	30500	24780	2500	125000	39
<b>62.14</b>	73730	67450	60460	54850	33850	27490	2500	125000	39
<b>77.20</b>	70340	66490	60460	57370	39400	32000	2500	125000	39
<b>93.42</b>	70340	66490	60460	57370	37930	30810	2500	125000	39
<b>110.09</b>	70340	66490	60460	57370	35800	29080	2500	125000	39
<b>133.38</b>	62830	53090	47640	45650	40950	33260	2500	125000	39

**(B)**

<b>46.23</b>	81040	74890	64500	52390	32330	26260	2500	125000	42
<b>54.39</b>	81040	74890	72270	58700	36220	29420	2500	125000	42
<b>63.10</b>	73730	67450	60460	57370	40190	32640	2500	125000	42
<b>72.16</b>	73730	67450	60460	57370	40700	33060	2500	125000	42
<b>78.39</b>	70340	66490	60460	57370	42020	34130	2500	125000	42
<b>89.64</b>	70340	66490	60460	57370	42020	34130	2500	125000	42
<b>93.22</b>	73730	67450	60460	57370	40450	32860	2500	125000	42
<b>115.80</b>	70340	66490	60460	57370	42020	34130	2500	125000	42
<b>140.31</b>	62830	53090	47640	45650	41170	33440	2500	125000	42

**(C)**

<b>41.10</b>	81040	74890	72940	67640	42750	34720	2000	125000	50
<b>48.35</b>	81040	74890	72940	67640	42750	34720	2000	125000	50
<b>52.87</b>	81040	74890	72940	67640	42750	34720	2000	125000	50
<b>62.20</b>	81040	74890	72940	67640	42750	34720	2000	125000	50
<b>75.00</b>	81040	74890	72940	67640	42750	34720	2000	125000	50
<b>89.64</b>	70340	66490	60460	57370	42020	34130	2000	125000	50
<b>108.08</b>	70340	66490	60460	57370	42020	34130	2000	125000	50
<b>130.95</b>	62830	53090	47640	45650	41170	33440	2000	125000	50

**RR6500 A4**

<b>176.34</b>	81040	69510	56460	45860	28300	22980	3500	125000	29
<b>207.46</b>	81040	74890	63260	51380	31710	25750	3500	125000	29
<b>245.90</b>	81040	74890	71260	57880	35710	29010	3500	125000	29
<b>289.30</b>	81040	74890	72940	64850	40020	32500	3500	125000	29
<b>339.96</b>	75440	71330	68360	65520	42750	34720	3500	125000	29
<b>398.24</b>	75440	71330	68360	65520	42750	34720	3500	125000	29
<b>416.93</b>	70340	66490	60460	57370	42020	34130	3500	125000	29
<b>505.08</b>	75440	71330	68360	65520	42270	34330	3500	125000	29
<b>573.93</b>	70340	66490	60460	57370	42020	34130	3500	125000	29
<b>602.78</b>	69790	65980	60460	57370	42020	34130	3500	125000	29
<b>619.44</b>	70340	66490	60460	57370	42020	34130	3500	125000	29
<b>727.91</b>	70340	66490	60460	57370	42020	34130	3500	125000	29
<b>895.55</b>	69790	65980	60460	57370	42020	34130	3500	125000	29
<b>1085.05</b>	62830	53090	47640	45650	41170	33440	3500	125000	29
<b>1179.83</b>	62830	53090	47640	45650	41170	33440	3500	125000	29



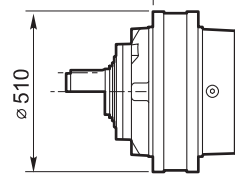
# RR6500

IT EN DE FR ES PT

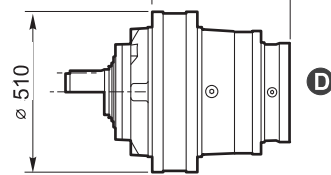
RR6500 L.. .. i



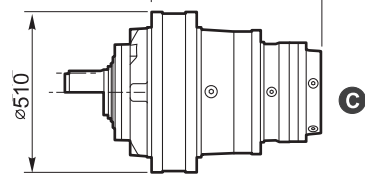
MS MC FS MH 262.5 RR6500 L1



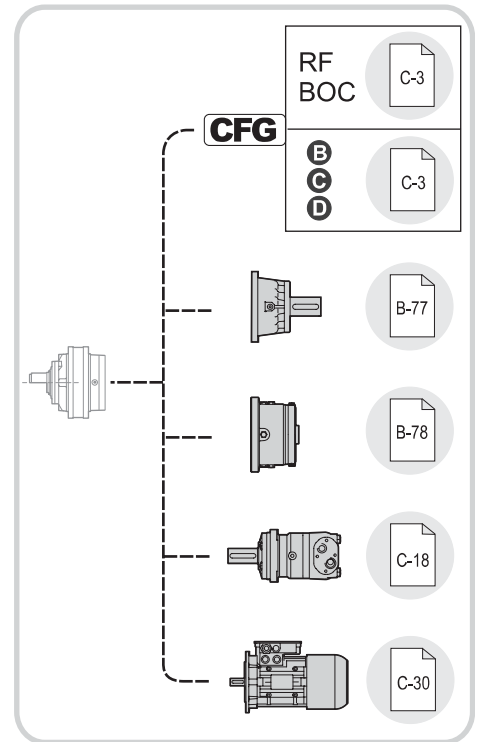
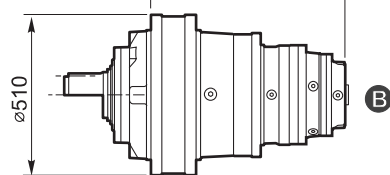
MS MC FS MH 427.5 RR6500 L2



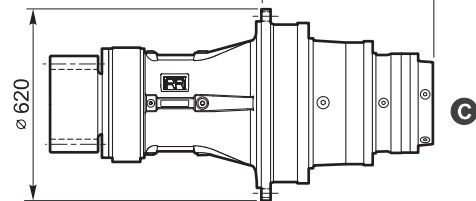
MS MC FS MH 520.5 RR6500 L3



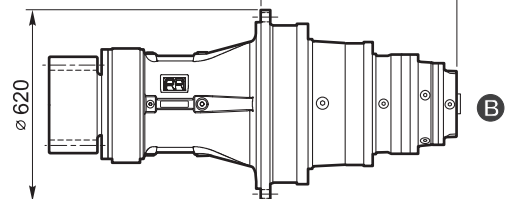
MS MC FS MH 588.5 RR6500 L4

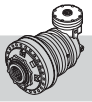


ZI 520.5 RR6500 L3

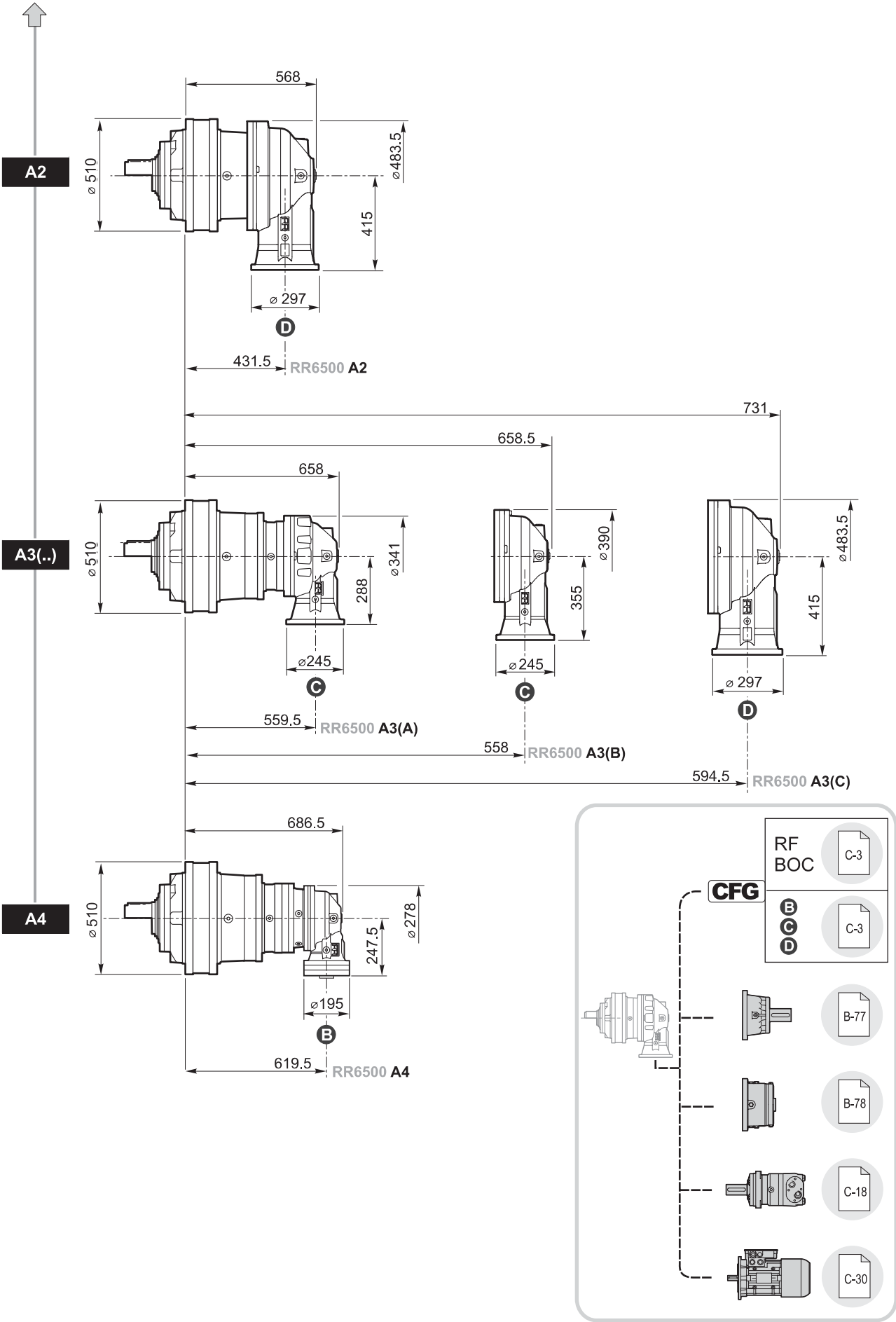


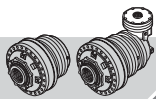
ZI 588.5 RR6500 L4





RR6500 A.. .. i

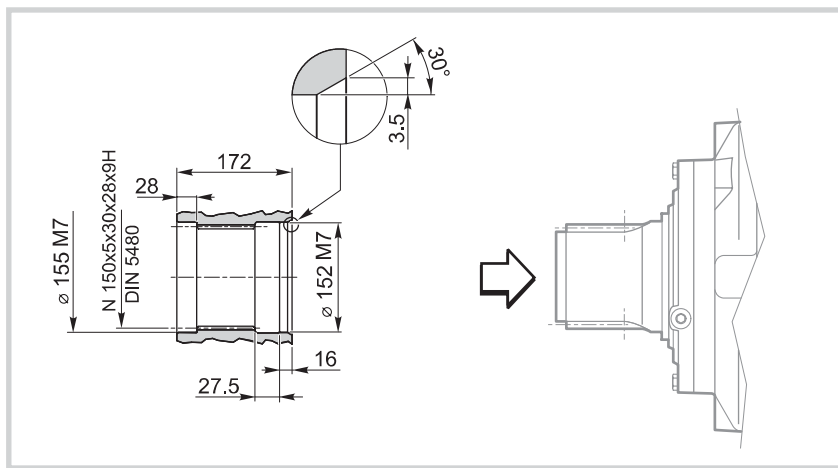
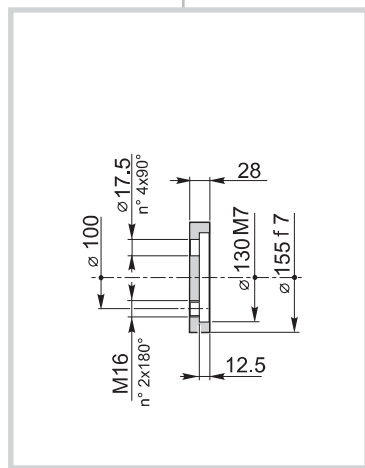
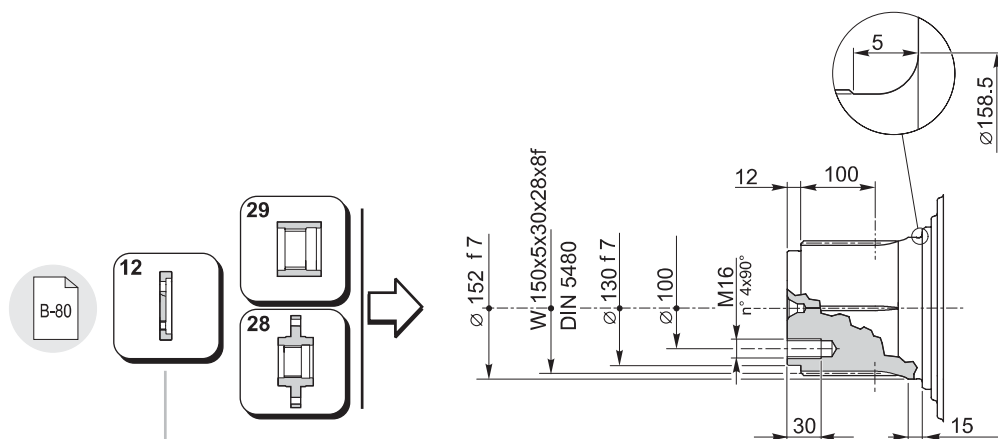
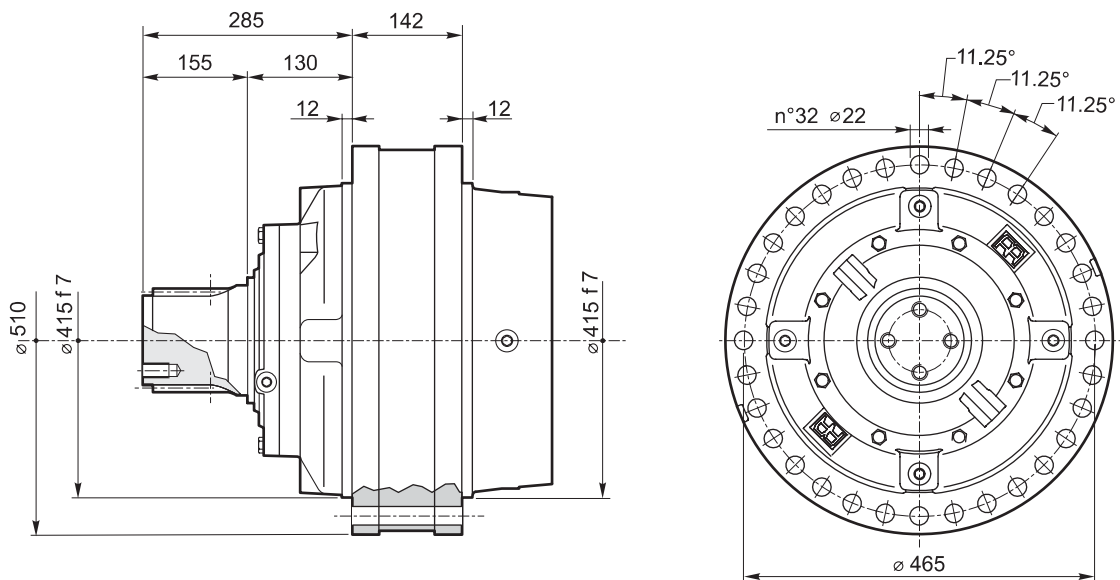


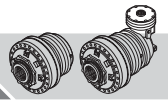


# RR6500

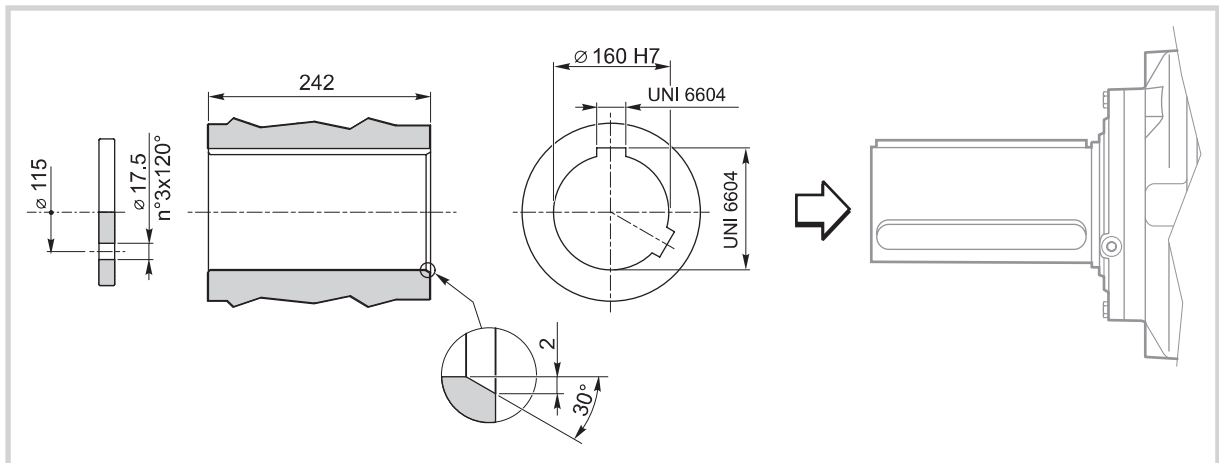
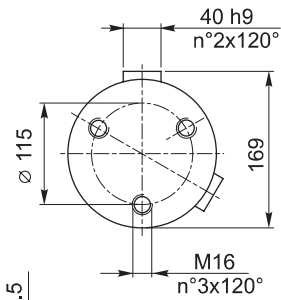
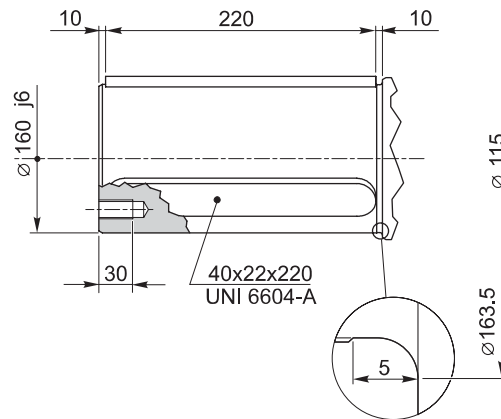
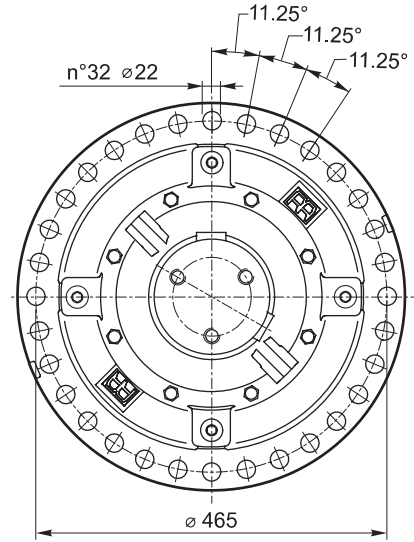
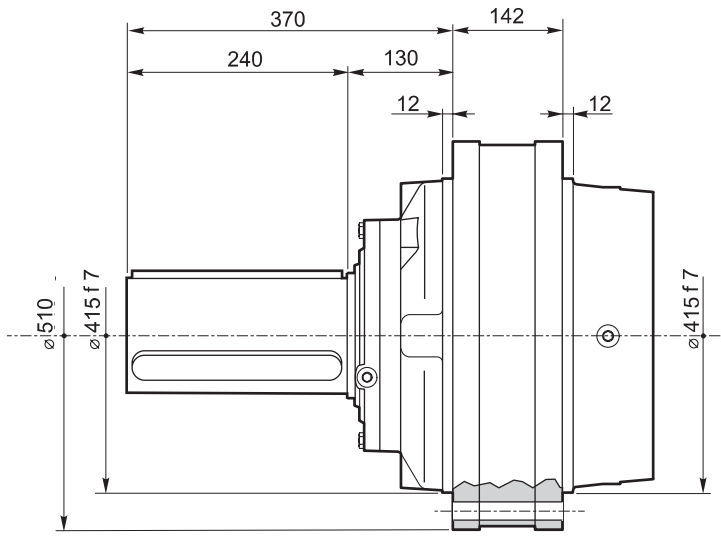
IT EN DE FR ES PT

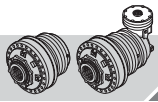
RR6500	L..	<b>MS</b>	i
RR6500	A..		i





RR6500	L..	<b>MC</b>	i
RR6500	A..		i

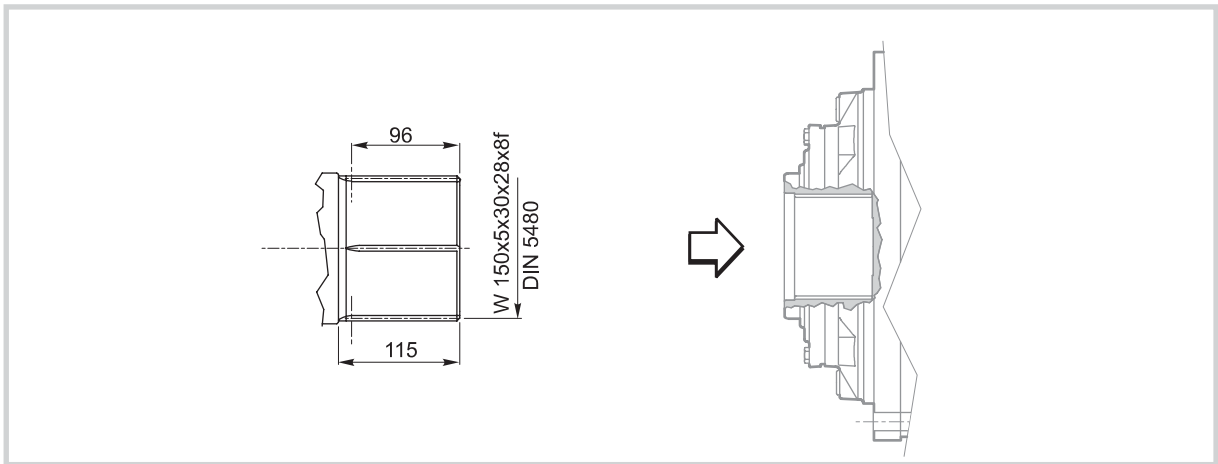
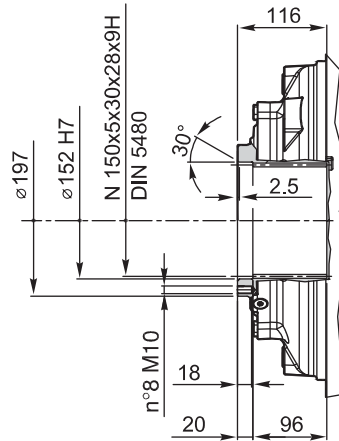
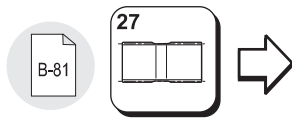
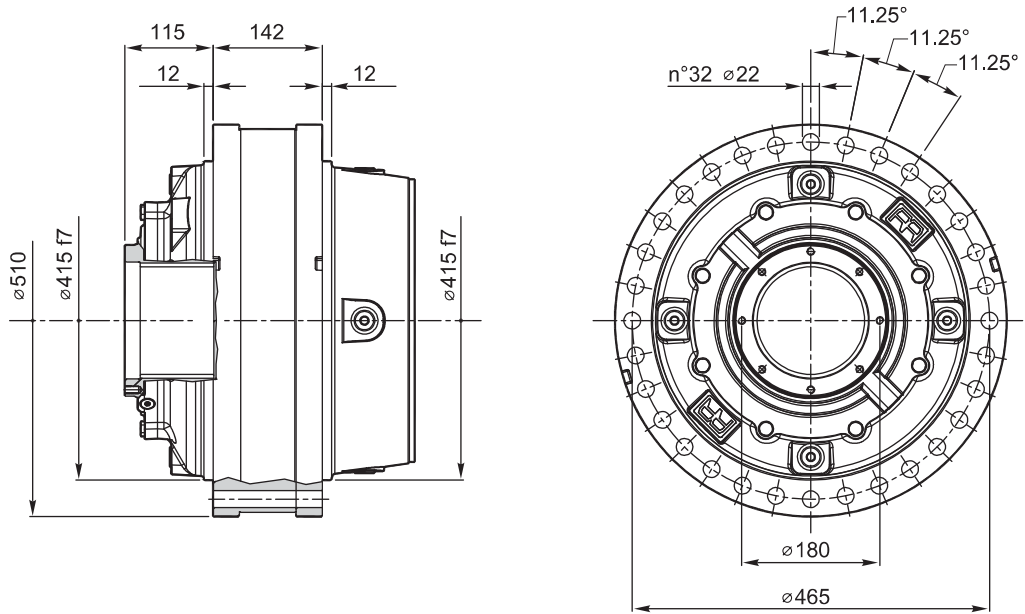


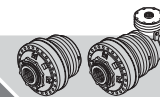


# RR6500

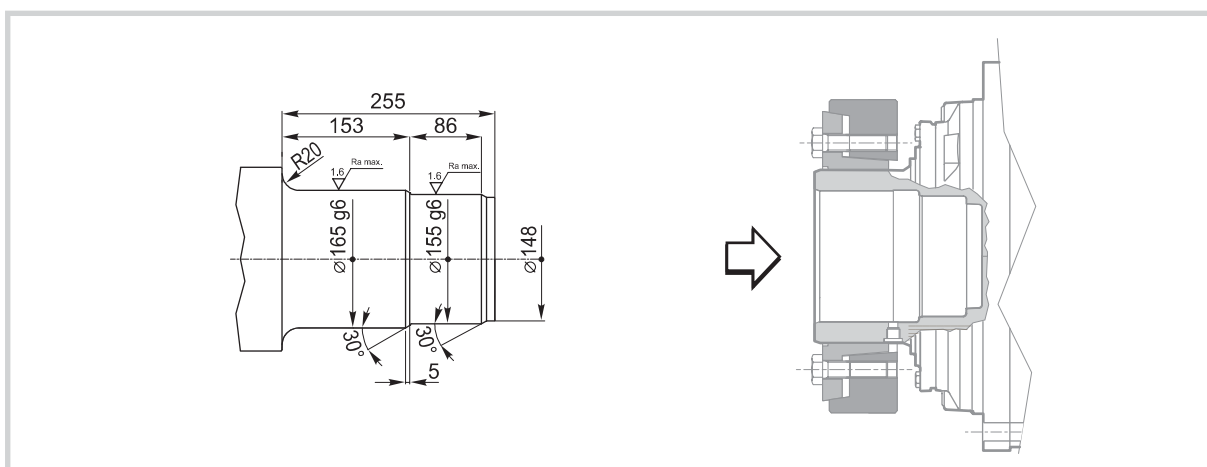
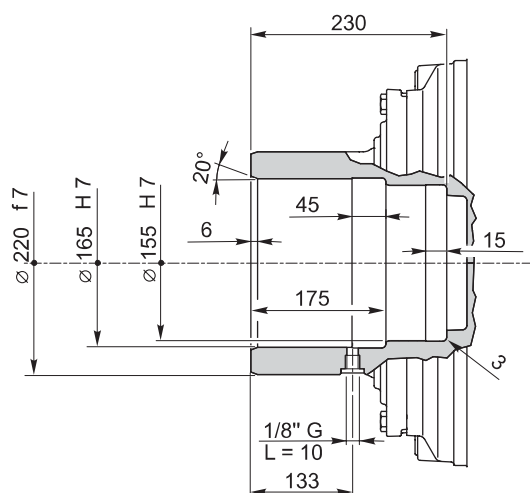
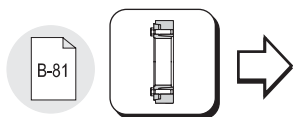
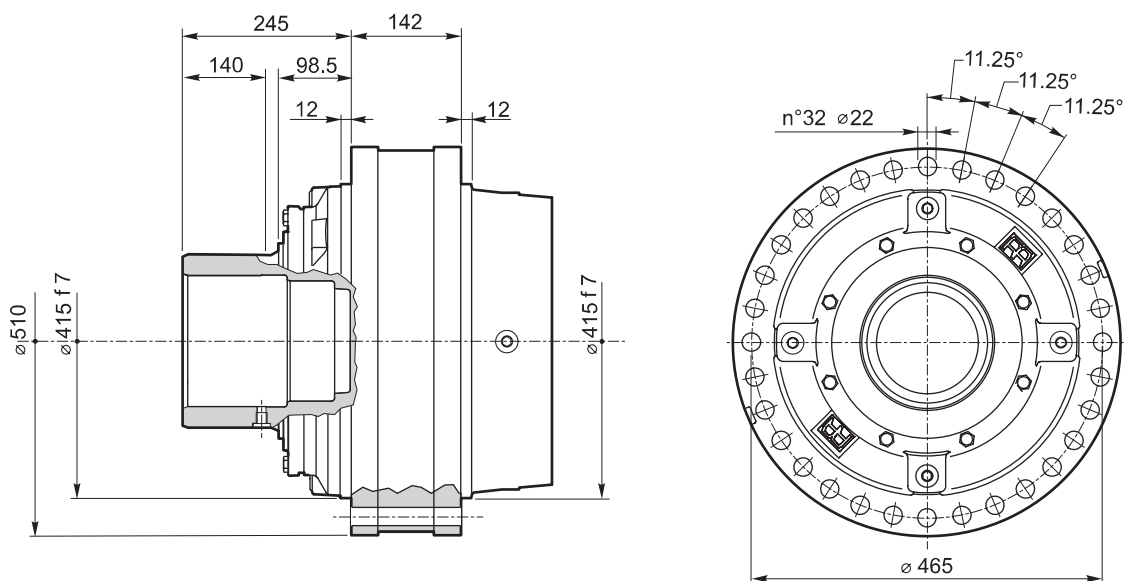
IT EN DE FR ES PT

RR6500	L..	<b>FS</b>	i
RR6500	A..		i





RR6500	L..	<b>MH</b>	i
RR6500	A..		i



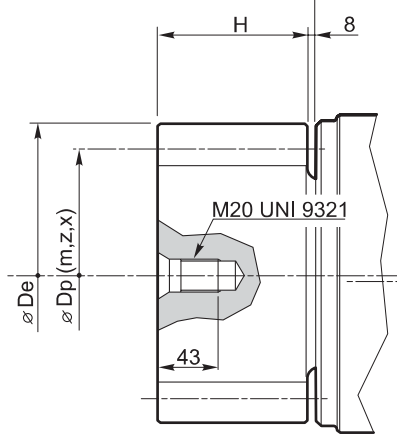
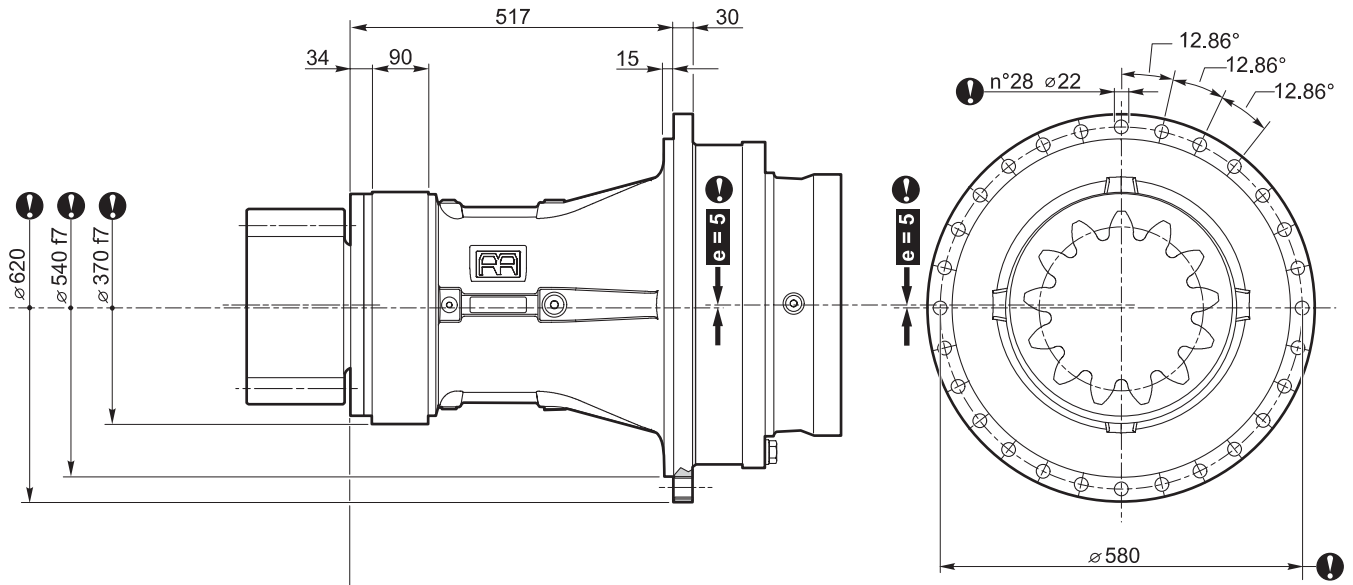




# RR6500

IT EN DE FR ES PT

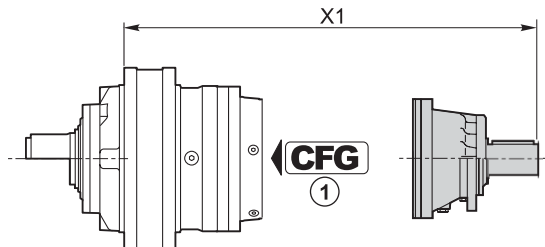
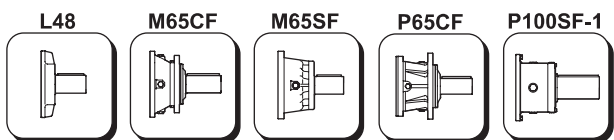
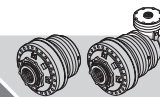
RR6500 L.. ZI i



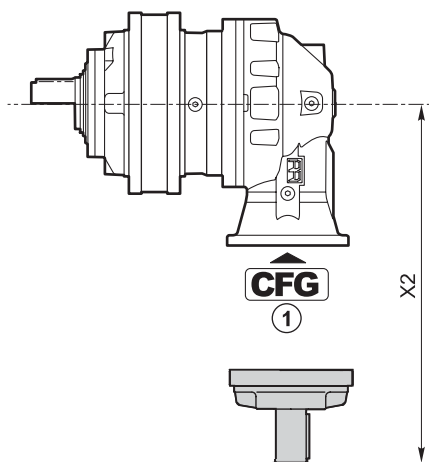
⚠ **Quote riferite all'asse con eccentricità "e"**  
**Dimensions that refer to the axis with "e" eccentricity**  
**Quoten beziehen sich auf die Achse mit Ausmittigkeit "e"**  
**Cotes se rapportant à l'axe avec excentricité "e"**  
**Quotas referidas ao eixo com excentricidade "e"**  
**Cotas referidas al eje con excentricidad "e"**

	m	z	x	H	Dp	De	code
	18	16	0.5	160	288	342	03-653
	20	15	0.5	160	300	360	03-652
	22	13	0.5	170	286	352	03-651

# RR6500

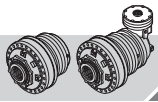


	<b>CFG</b> ①		code	X1
RR6500 L2	—	P100SF-1	154F3322	804
RR6500 L3	—	P65CF	154-2404	832.5
RR6500 L4	RF	M65SF	154B4249	773
	RF	M65CF	154-2407	796
	BOC	L48	154B3989	709.8



	<b>CFG</b> ①		code	X2
RR6500 A2	—	P100SF-1	154F3322	791.5
RR6500 A3(A)	—	P65CF	154-2404	600
RR6500 A3(B)	—	P65CF	154-2404	667
RR6500 A3(C)	—	P100SF-1	154F3322	791.5
RR6500 A4	BOC	L48	154B3989	347.8

<b>CFG</b>	
RF	
<b>B</b> <b>C</b> <b>D</b>	



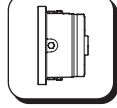
# RR6500

IT EN DE FR ES PT

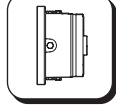
RF170-290



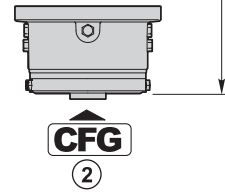
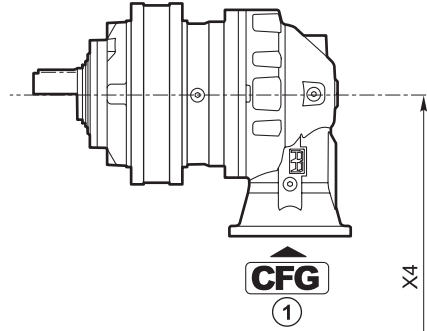
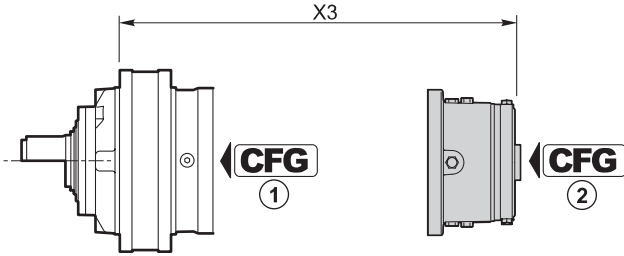
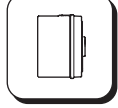
RF5/..



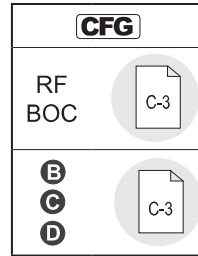
RFF5/..



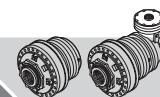
RF2/..



RF170-290	CFG ①	T <sub>f</sub> [Nm]	CFG ②		
			C		
			code	X3	X4
RR6500 L3	RF	1700	154B9766M4	717.5	—
		2000	154B9767M4		
		2300	154B9768M4		
		2900	154B9769M4		
RR6500 A3(A)	—	1700	154B9766M3	—	485
		2000	154B9767M3		
		2300	154B9768M3		
		2900	154B9769M3		
RR6500 A3(B)	—	1700	154B9766M3	—	552
		2000	154B9767M3		
		2300	154B9768M3		
		2900	154B9769M3		



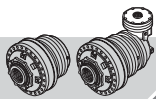
RF5/..	CFG ①	T <sub>f</sub> [Nm]	CFG ②						
			B			OMTS 12/24 z16	OMVS 10/20 z16	X3	X4
			code	X3	X4	code	code		
RR6500 L4	RF	210	154-2872	678.8	—	154-2879	154-2886	682.5	—
		290	154-2873			154-2880	154-2887		
		430	154-2874			154-2881	154-2888		
		650	154-2875			154-2882	154-2889		
		850	154-2876			154-2883	154-2890		
		1100	154-2877			154-2884	154-2891		
		1300	154-2878			154-2885	154-2892		



RFF5/..	CFG ①	T <sub>r</sub> [Nm]	CFG ②							
			B			OMTS 12/24 z16	OMVS 10/20 z16			
			code	X3	X4	code	code	X3	X4	
RR6500 A4	RF	210	154-2893	—	316.6	154-5338	154-5345	—	320.5	
		290	154-2894			154-5339	154-5346			
		430	154-2895			154-5340	154-5347			
		650	154-2896			154-5341	154-5348			
		850	154-2897			154-5342	154-5349			
		1100	154-2898			154-5343	154-5350			
		1300	154-2899			154-5344	154-5351			

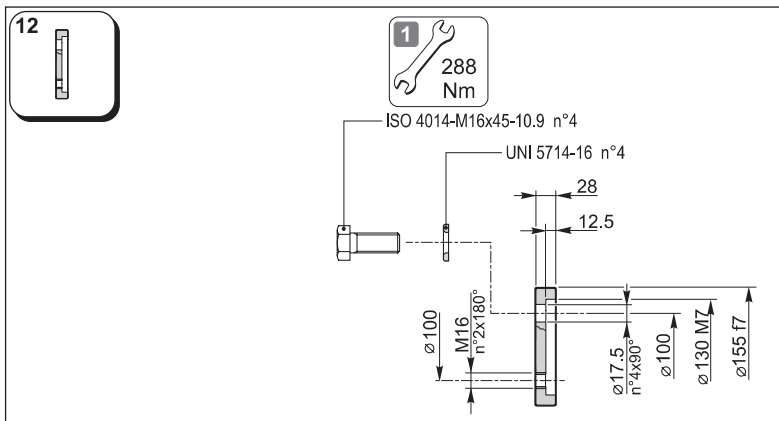
CFG	
RF	
B C D	

RF2/..	CFG ①	T <sub>r</sub> [Nm]	CFG ②								
			B			OMP/OMR SAE A 2B Ø 25	OMP/OMR SAE A 2B 1" 6B	OMP/OMR SAE A 4B Ø 25	OMP/OMR SAE A 4B 1" 6B		
			code	X3	X4	code	code	code	code	X3	X4
RR6500 L4	RF	70	154-2345	651.3	—	154-2345M10	154-2345M11	154-2345M16	154-2345M17	641.3	—
		140	154-2346			154-2346M10	154-2346M11	154-2346M16	154-2346M17		
		210	154-2347			154-2347M10	154-2347M11	154-2347M16	154-2347M17		
		320	154-2348			154-2348M10	154-2348M11	154-2348M16	154-2348M17		
		430	154-2349			154-2349M10	154-2349M11	154-2349M16	154-2349M17		
		600	154B9186			154B9186M10	154B9186M11	154B9186M16	154B9186M17		
RR6500 A4	RF	70	154F2991	—	285.3						
		140	154F1890								
		210	154F2961								
		320	154B3591								
		430	154B3592								
	600	154F2992									



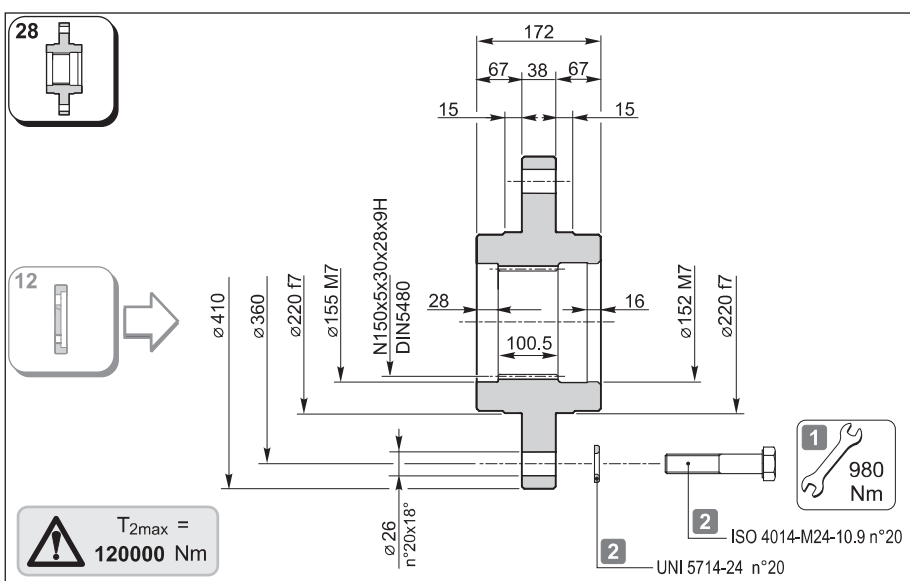
# RR6500

IT EN DE FR ES PT



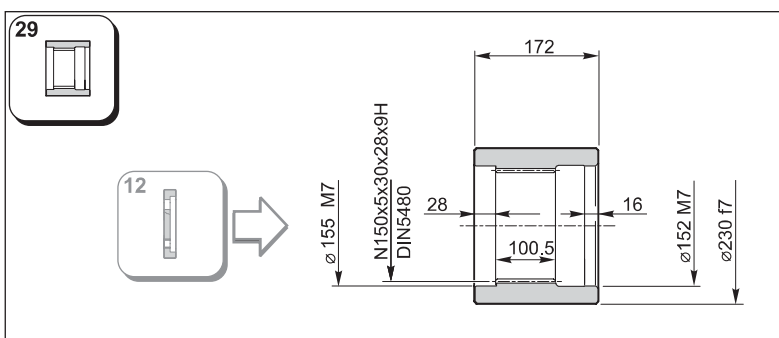
154F6033

Materiale / Material / Material / Matériau / Material / Material:  
 Acciaio / Steel / Stahl / Acier / Acero / Aço  
 EN 10083-1-42CrMo4+QT (1.7225)



154F6051

Materiale / Material / Material  
 Matériau / Material / Material  
 Acciaio / Steel / Stahl / Acier / Acero / Aço  
 EN 10083-1-C40 (1.1186)

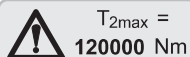
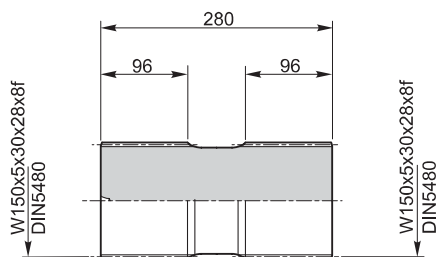
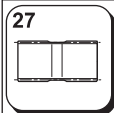
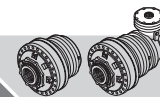


154F6059

Materiale / Materiale / Material / Matériau / Material / Material:  
 Acciaio / Steel / Stahl / Acier / Acero / Aço  
 EN 10083-1-42CrMo4+QT (1.7225)

**1** Coefficiente d'attrito medio considerato: 0.14  
 Average friction coefficient considered: 0.14  
 Durchschnittlicher berücksichtigter Reibungskoeffizient: 0.14  
 Coefficient de frottement moyen considéré: 0.14  
 Coeficiente medio de fricción considerado: 0.14  
 Coeficiente de atrito médio considerado: 0.14

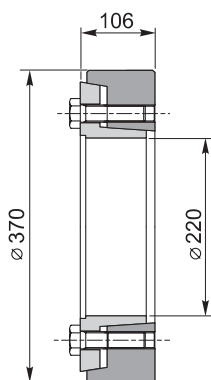
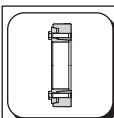
**2** Componenti non forniti da Reggiana Riduttori  
 Components not supplied by Reggiana Riduttori  
 Nicht von Reggiana Riduttori gelieferte Komponenten  
 Parties pas fournies par Reggiana Riduttori  
 Componentes no suministrados por Reggiana Riduttori  
 Componentes não fornecidos por Reggiana Riduttori



$T_{2max} =$   
120000 Nm

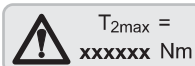
Materiale / Material / Material / Matériau / Material / Material:  
Acciaio / Steel / Stahl / Acier / Acero / Aço  
EN 10083-1-42CrMo4+QT (1.7225)

154F6039



C-38

154F6067



$T_{2max} =$   
xxxxxxx Nm

#### ATTENZIONE

Il valore di  $T_{2max}$  indicato costituisce una limitazione del valore relativo al riduttore, riportato nella tabella dei dati tecnici per ciascuna grandezza.

#### ATTENTION

The  $T_{2max}$  value indicated is a limit of the reduction gear value, given in the technical data table for each size.

#### ACHTUNG!

Der angegebene Wert  $T_{2max}$  stellt eine Einschränkung vom entsprechenden Wert am Untersetzungsgetriebe dar, der in der Tabelle mit den technischen Daten für jede Größe angegeben ist.

#### ATTENTION

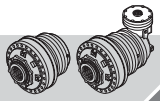
Le valeur de  $T_{2max}$  indiquée représente une restriction de la valeur relative au réducteur et indiquée sur le tableau des caractéristiques techniques pour chaque grandeur.

#### ATENCIÓN

El valor de  $T_{2max}$  indicado constituye una limitación del valor referente al reductor, indicado en la tabla de los datos técnicos para cada talla.

#### ATENÇÃO

O valor  $T_{2max}$  indicado representa uma limitação do valor relativo ao redutor, indicado na tabela dos dados técnicos para cada grandeza.



# RR650

IT EN DE FR ES PT

