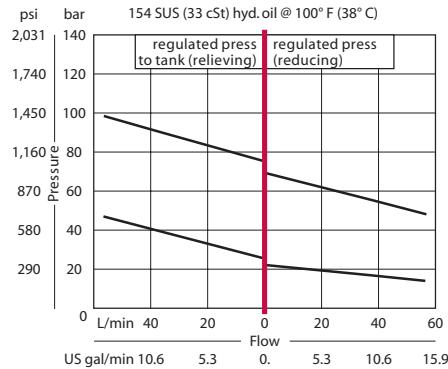


## OPERATION

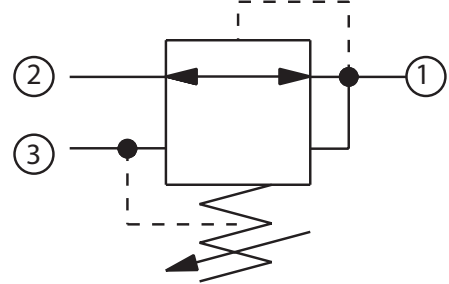
This is a direct-acting pressure reducing/relieving valve.

## SPECIFICATIONS

### Theoretical performance



### Schematic



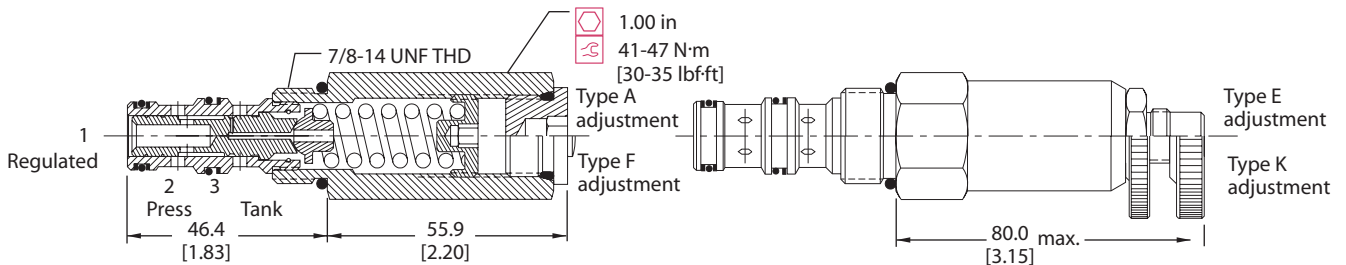
### Specifications

Rated pressure	210 bar [3000 psi]
Rated flow at 7 bar [100 psi]	40 l/min [10 US gal/min]
Weight	0.23 kg [0.51 lb]
Cavity	SDC10-3

## DIMENSIONS

mm [in]

### Cross-sectional view



## ORDERING INFORMATION

<b>CP230 - 1 - B - 6S - A - C - 100</b>			
<b>Seals</b>	<b>Seal kit</b>	<b>Housing P/N</b>	<b>Pressure setting</b>
B = Buna-N	120570	No Housing	Code x 10psi (0.69 bar)
V = Viton	120571	SDC10-3-SE-3B	Example: 100 = 1000 psi (70 bar)
<b>Housing and ports</b>		SDC10-3-SE-4B	
0 = No Housing		CP10-3-6S	
SE3B = Al, 3/8 BSP		CP10-3-8S	
SE4B = Al, 1/2 BSP			
6S = Al, #6 SAE			
8S = Al, #8 SAE			
Other housings available			
<b>Adjustment option</b>			<b>Pressure range</b>
A = Internal			A = 4-28 [50-400]
E = External			Std. setting 17 [250]
F = Tamper resistant			B = 5-55 [75-800]
K = Knob			Std. setting 28 [400]
			C = 7-97 [100-1400]
			Std. setting 69 [1000]
			D = 34-166 [500-2400]
			Std. setting 103 [1500]