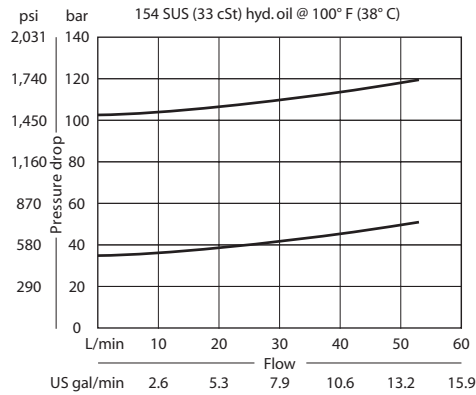


OPERATION

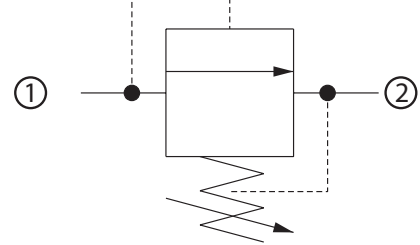
This is a direct acting spool-type relief valve that relieves from 1 to 2.

SPECIFICATIONS

Theoretical performance



Schematic



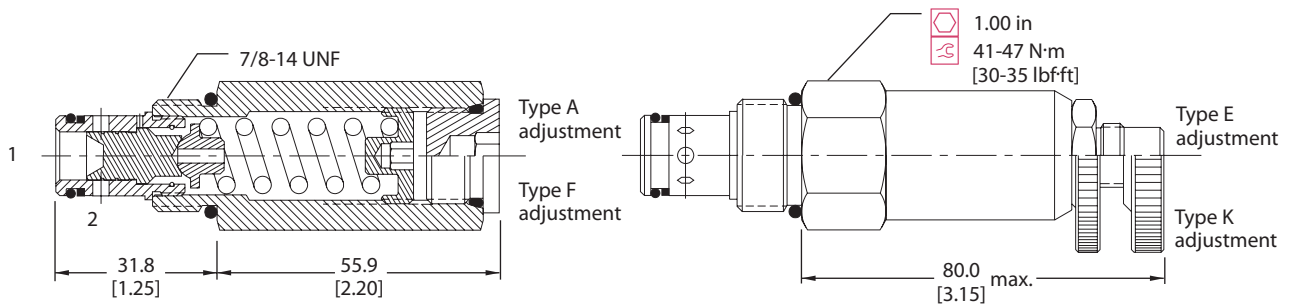
Specifications

Rated pressure	210 bar [3000 psi]
Rated flow	45 l/min [12 US gal/min]
Leakage	82 cm ³ /min [5 in ³ /min] @ 80% of pressure setting
Weight	0.22 kg [0.48 lb]
Cavity	SDC10-2

DIMENSIONS

mm [in]

Cross-sectional view



ORDERING INFORMATION

CP210 - 1 - B - 6S - A - C - 075

Seals	B = Buna-N V = Viton	Seal kit	120015 120016
Housing and ports	0 = No Housing DG3B = Al, 3/8 BSP DG4B = Al, 1/2 BSP 6S = Al, #6 SAE 8S = Al, #8 SAE Other housings available	Housing P/N	No Housing SDC10-2-DG-3B SDC10-2-DG-4B CP10-2-6S CP10-2-8S
Adjustment option	A = Internal E = External F = Tamper resistant K = Knob	Crack pressure	Code x 10 = psi Example: 075 = 750 psi
		Pressure range	bar [psi]
		A =	3.4-28 [50-400]
		Standard	17 [250]
		B =	5.5-55 [80-800]
		Standard	28 [400]
		C =	6.9-97 [100-1400]
		Standard	52 [750]
		D =	34-166 [500-2400]
		Standard	103 [1500]