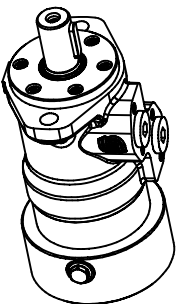
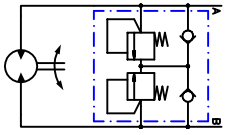


Shock valve setting: 80 bar



Tolerance for basic dimensions = ±1 mm (0.04 inch)

D: G 1/2; 15 [0.59] deep

Scale	Projection		OMP 200
Date	2005.01.07		
Design E1	Approv.		
<p><small>Responsible: Product-Engineering (Producting) / S. Danfoss. Not to be printed with the word "end" for other parts. The drawing is the property of Danfoss. All rights reserved. Danfoss is not responsible for possible errors or omissions. Sauer-Danfoss (Producting) / S/S reserves the right to alter products design or provide that same modification can be made without announcement. Always bring Danfoss's specifications into account.</small></p>			
No.	8_151-5250_7		
	w. cyl. ø25 shaft, EP		
	A2 fl., spec. end cover		