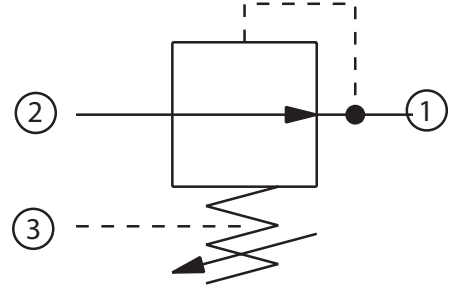


OPERATION

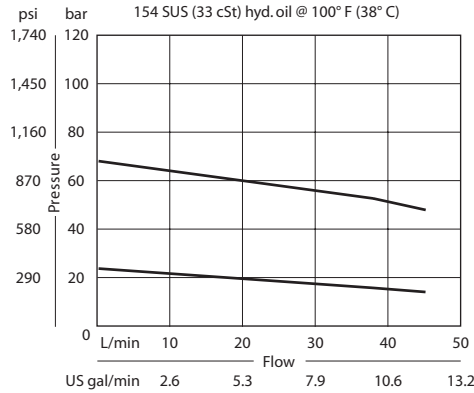
This is a direct-acting pressure-reducing (non-relieving) valve.

Schematic



SPECIFICATIONS

Theoretical performance



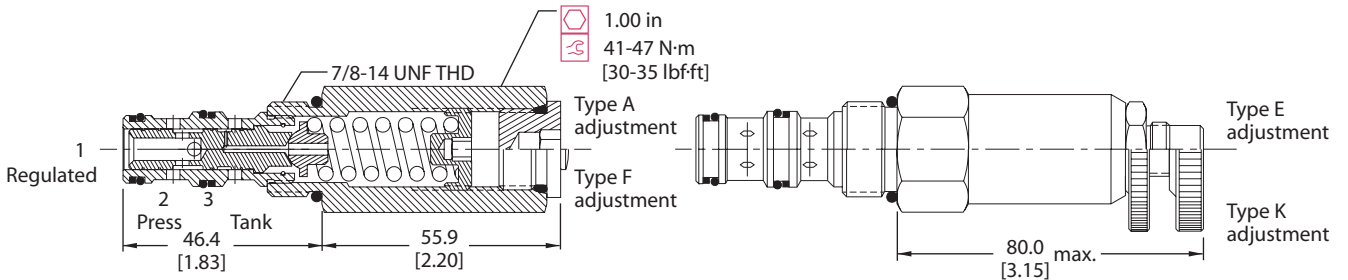
Specifications

Rated pressure	210 bar [3000 psi]
Rated flow at 7 bar [100 psi]	40 l/min [10 US gal/min]
Weight	0.25 kg [0.56 lb]
Cavity	SDC10-3

DIMENSIONS

mm [in]

Cross-sectional view



ORDERING INFORMATION

CP230 - 2 - B - 6S - A - C - 100

Seals B = Buna-N V = Viton	Seal kit 120027 120028	Housing P/N No Housing SDC10-3-SE-3B SDC10-3-SE-4B CP10-3-6S CP10-3-8S	Crack pressure Code x 10 = psi Example: 100 = 1000 psi																								
Housing and ports 0 = No Housing SE3B = AI, 3/8 BSP SE4B = AI, 1/2 BSP 6S = AI, #6 SAE 8S = AI, #8 SAE Other housings available			Pressure range																								
Adjustment option A = Internal E = External F = Tamper resistant K = Knob			<table border="0"> <tr> <td>A =</td> <td>4-28</td> <td>[psi]</td> </tr> <tr> <td>Std. setting</td> <td>17</td> <td>[250]</td> </tr> <tr> <td>B =</td> <td>5-55</td> <td>[75-800]</td> </tr> <tr> <td>Std. setting</td> <td>28</td> <td>[400]</td> </tr> <tr> <td>C =</td> <td>7-97</td> <td>[100-1400]</td> </tr> <tr> <td>Std. setting</td> <td>69</td> <td>[1000]</td> </tr> <tr> <td>D =</td> <td>34-166</td> <td>[500-2400]</td> </tr> <tr> <td>Std. setting</td> <td>103</td> <td>[1500]</td> </tr> </table>	A =	4-28	[psi]	Std. setting	17	[250]	B =	5-55	[75-800]	Std. setting	28	[400]	C =	7-97	[100-1400]	Std. setting	69	[1000]	D =	34-166	[500-2400]	Std. setting	103	[1500]
A =	4-28	[psi]																									
Std. setting	17	[250]																									
B =	5-55	[75-800]																									
Std. setting	28	[400]																									
C =	7-97	[100-1400]																									
Std. setting	69	[1000]																									
D =	34-166	[500-2400]																									
Std. setting	103	[1500]																									

PR - Pressure Reducing Valves
CP230-2