



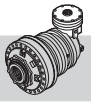
# RR8000

IT EN DE FR ES PT

RR8000 L.. .. **i**



i	T <sub>2</sub> [Nm]						n <sub>1max</sub> [min <sup>-1</sup> ]	T <sub>2max</sub> [Nm]	P <sub>t</sub> [kW]	
	n <sub>2</sub> x h									
1/...	10000 (10 <sup>4</sup> )	25000 (2.5 · 10 <sup>4</sup> )	50000 (5 · 10 <sup>4</sup> )	100000 (10 <sup>5</sup> )	500000 (5 · 10 <sup>5</sup> )	1000000 (10 <sup>6</sup> )				
<b>RR8000 L1</b>	<b>4.17</b>	89660	82800	81650	75370	48550	39430	750	160000	94
	<b>4.65</b>	80090	73450	69250	63080	48160	39120	750	160000	94
	<b>5.29</b>	78580	67570	59540	55310	47110	38260	750	160000	94
	<b>6.21</b>	63030	53270	46900	44600	40410	37950	750	160000	94
<b>RR8000 L2</b>	<b>17.42</b>	89660	82800	81650	75370	48550	39430	1000	160000	59
	<b>19.41</b>	89660	82800	81650	75370	48550	39430	1000	160000	59
	<b>22.10</b>	89660	82800	81650	75370	48550	39430	1000	160000	59
	<b>25.94</b>	89660	82800	81650	75370	48550	39430	1000	160000	59
	<b>28.90</b>	80090	73450	69250	63080	48160	39120	1000	160000	59
	<b>32.90</b>	78580	67570	59540	55310	47110	38260	1000	160000	59
	<b>38.62</b>	63030	53270	46900	44600	40410	37950	1000	160000	59
<b>RR8000 L3</b>	<b>67.94</b>	89660	82800	81650	75370	48550	39430	2000	160000	43
	<b>76.86</b>	89660	82800	81650	75370	48550	39430	2000	160000	43
	<b>89.60</b>	89660	82800	81650	75370	48550	39430	2000	160000	43
	<b>99.82</b>	89660	82800	81650	75370	48550	39430	2000	160000	43
	<b>109.28</b>	89660	82800	81650	75370	48550	39430	2000	160000	43
	<b>121.75</b>	89660	82800	81650	75370	48550	39430	2000	160000	43
	<b>138.61</b>	89660	82800	81650	75370	48550	39430	2000	160000	43
	<b>162.70</b>	89660	82800	81650	75370	48550	39430	2000	160000	43
	<b>181.26</b>	80090	73450	69250	63080	48160	39120	2000	160000	43
	<b>206.37</b>	78580	67570	59540	55310	47110	38260	2000	160000	43
	<b>242.24</b>	63030	53270	46900	44600	40410	37950	2000	160000	43
	<b>RR8000 L4</b>	<b>231.01</b>	89660	82800	81650	75370	48550	39430	3500	160000
<b>271.78</b>		89660	82800	81650	75370	48550	39430	3500	160000	34
<b>307.44</b>		89660	82800	81650	75370	48550	39430	3500	160000	34
<b>358.39</b>		89660	82800	81650	75370	48550	39430	3500	160000	34
<b>399.26</b>		89660	82800	81650	75370	48550	39430	3500	160000	34
<b>447.98</b>		89660	82800	81650	75370	48550	39430	3500	160000	34
<b>499.08</b>		89660	82800	81650	75370	48550	39430	3500	160000	34
<b>565.43</b>		89660	82800	81650	75370	48550	39430	3500	160000	34
<b>633.83</b>		89660	82800	81650	75370	48550	39430	3500	160000	34
<b>708.10</b>		89660	82800	81650	75370	48550	39430	3500	160000	34
<b>801.02</b>		89660	82800	81650	75370	48550	39430	3500	160000	34
<b>852.22</b>		89660	82800	81650	75370	48550	39430	3500	160000	34
<b>970.27</b>		89660	82800	81650	75370	48550	39430	3500	160000	34
<b>1138.91</b>		89660	82800	81650	75370	48550	39430	3500	160000	34
<b>1268.82</b>		80090	73450	69250	63080	48160	39120	3500	160000	34
<b>1444.57</b>		78580	67570	59540	55310	47110	38260	3500	160000	34
<b>1695.65</b>		63030	53270	46900	44600	40410	37950	3500	160000	34



RR8000 A.. .. **i**



i	T <sub>2</sub> [Nm]						n <sub>1max</sub> [min <sup>-1</sup> ]	T <sub>2max</sub> [Nm]	P <sub>t</sub> [kW]
	n <sub>2</sub> x h								
	10000 (10 <sup>4</sup> )	25000 (2.5 · 10 <sup>4</sup> )	50000 (5 · 10 <sup>4</sup> )	100000 (10 <sup>5</sup> )	500000 (5 · 10 <sup>5</sup> )	1000000 (10 <sup>6</sup> )			

<b>RR8000 A3 (A)</b>	<b>47.51</b>	89660	68900	55960	45460	28050	22780	2500	160000	47	
	<b>52.93</b>	89660	74310	60360	49030	30250	24570	2500	160000	47	
	<b>60.27</b>	89660	81370	66090	53690	33130	26910	2500	160000	47	
	<b>70.74</b>	89660	82800	73940	60060	37060	30100	2500	160000	47	
	<b>78.81</b>	80090	73450	69250	63080	39970	32460	2500	160000	47	
	<b>89.72</b>	78580	67570	59540	55310	43770	35550	2500	160000	47	
	<b>95.36</b>	80090	73450	69250	62360	38480	31260	2500	160000	47	
	<b>108.57</b>	78580	67570	59540	55310	42140	34230	2500	160000	47	
	<b>127.94</b>	78580	67570	59540	55310	39770	32310	2500	160000	47	
	<b>150.18</b>	63030	53270	46900	44600	40410	36140	2500	160000	47	
	<b>(B)</b>	<b>48.24</b>	89660	81810	66450	53980	33310	27050	2500	160000	50
		<b>53.75</b>	89660	82800	71670	58220	35920	29180	2500	160000	50
		<b>61.19</b>	89660	82800	78490	63750	39340	31950	2500	160000	50
		<b>71.83</b>	89660	82800	81650	71320	44010	35740	2500	160000	50
		<b>80.02</b>	80090	73450	69250	63080	47460	38550	2500	160000	50
<b>91.51</b>		80090	73450	69250	63080	48060	39040	2500	160000	50	
<b>106.11</b>		89660	82800	81650	71780	44290	35980	2500	160000	50	
<b>118.21</b>		80090	73450	69250	63080	47770	38800	2500	160000	50	
<b>134.59</b>	78580	67570	59540	55310	47110	38260	2500	160000	50		
<b>157.98</b>	63030	53270	46900	44600	40410	37950	2500	160000	50		
<b>(C)</b>	<b>42.88</b>	89660	82800	81650	75370	48550	39430	2000	160000	58	
	<b>55.17</b>	89660	82800	81650	75370	48550	39430	2000	160000	58	
	<b>66.52</b>	89660	82800	81650	75370	48550	39430	2000	160000	58	
	<b>74.11</b>	89660	82800	81650	75370	48550	39430	2000	160000	58	
	<b>84.37</b>	89660	82800	81650	75370	48550	39430	2000	160000	58	
	<b>99.04</b>	89660	82800	81650	75370	48550	39430	2000	160000	58	
	<b>110.33</b>	80090	73450	69250	63080	48160	39120	2000	160000	58	
	<b>125.61</b>	78580	67570	59540	55310	47110	38260	2000	160000	58	
<b>147.45</b>	63030	53270	46900	44600	40410	37950	2000	160000	58		

<b>RR8000 A4 (A)</b>	<b>182.93</b>	89660	71320	57930	47050	29030	23580	3500	160000	36
	<b>206.93</b>	89660	77750	63150	51290	31650	25710	3500	160000	36
	<b>241.22</b>	89660	82800	70300	57100	35240	28620	3500	160000	36
	<b>268.74</b>	89660	82800	75830	61590	38000	30870	3500	160000	36
	<b>294.22</b>	89660	82800	80790	65620	40490	32890	3500	160000	36
	<b>327.78</b>	89660	82800	81650	70780	43670	35470	3500	160000	36
	<b>373.18</b>	89660	82800	81650	75370	47820	38840	3500	160000	36
	<b>438.04</b>	89660	82800	81650	75370	48550	39430	3500	160000	36
	<b>513.13</b>	89660	82800	81650	75370	48550	39430	3500	160000	36
	<b>554.44</b>	89660	82800	81650	73130	45120	36650	3500	160000	36
	<b>650.81</b>	89660	82800	81650	75370	48550	39430	3500	160000	36
	<b>725.04</b>	80090	73450	69250	63080	48160	39120	3500	160000	36
	<b>825.47</b>	78580	67570	59540	55310	47110	38260	3500	160000	36
	<b>968.94</b>	63030	53270	46900	44600	40410	37950	3500	160000	36
	<b>(B)</b>	<b>185.30</b>	89660	82800	81650	75370	48550	39430	2500	160000
<b>224.22</b>		89660	82800	81650	75370	48550	39430	2500	160000	39
<b>264.23</b>		89660	82800	81650	75370	48550	39430	2500	160000	39
<b>298.04</b>		89660	82800	81650	75370	48550	39430	2500	160000	39
<b>348.43</b>		89660	82800	81650	75370	48550	39430	2500	160000	39
<b>401.76</b>		89660	82800	81650	75370	48550	39430	2500	160000	39
<b>473.45</b>		89660	82800	81650	75370	48550	39430	2500	160000	39
<b>539.04</b>		89660	82800	81650	75370	48550	39430	2500	160000	39
<b>632.73</b>		89660	82800	81650	75370	48550	39430	2500	160000	39
<b>704.90</b>		80090	73450	69250	63080	48160	39120	2500	160000	39
<b>802.54</b>		78580	67570	59540	55310	47110	38260	2500	160000	39
<b>942.03</b>		63030	53270	46900	44600	40410	37950	2500	160000	39



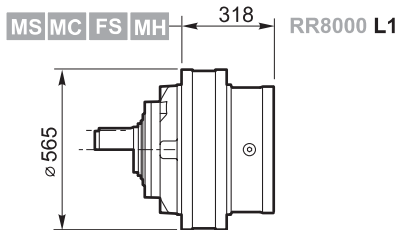
# RR8000

IT EN DE FR ES PT

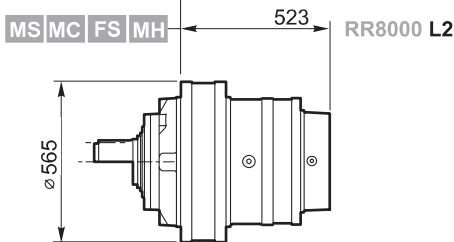
RR8000 L.. .. i



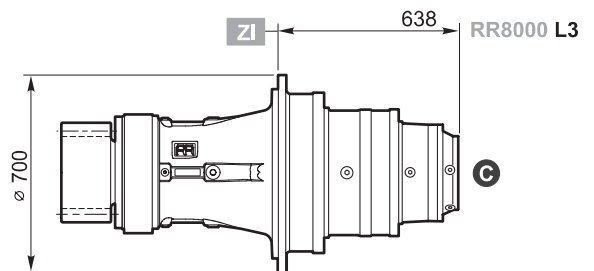
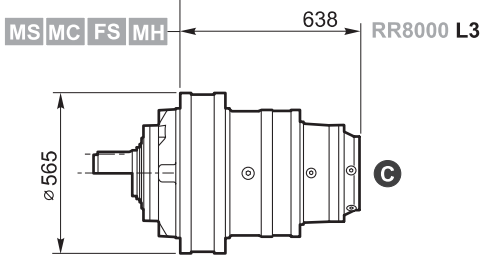
L1



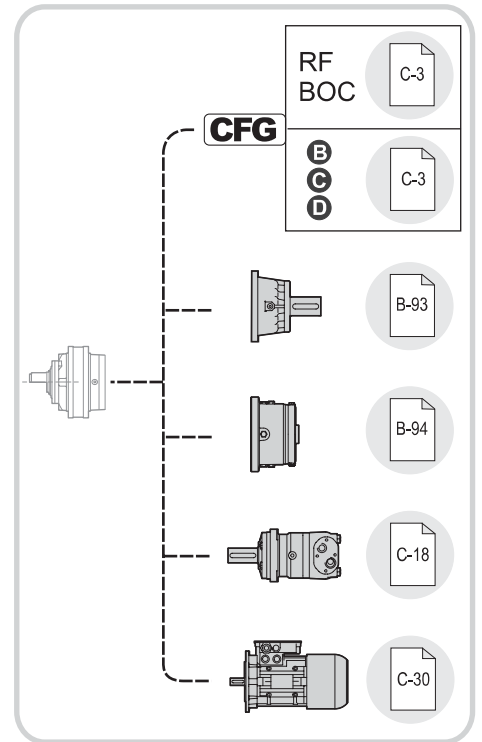
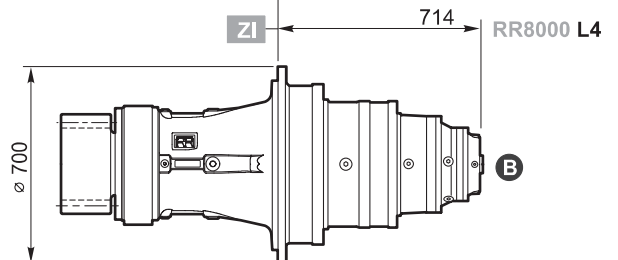
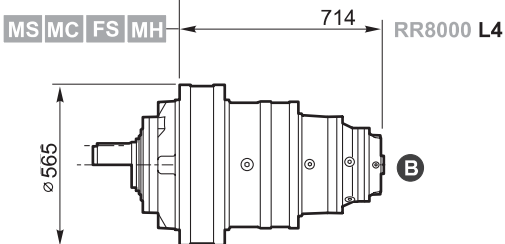
L2

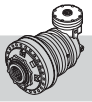


L3

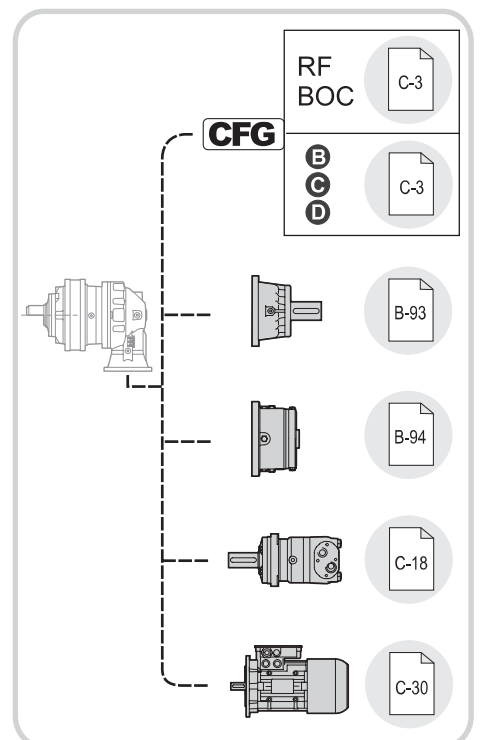
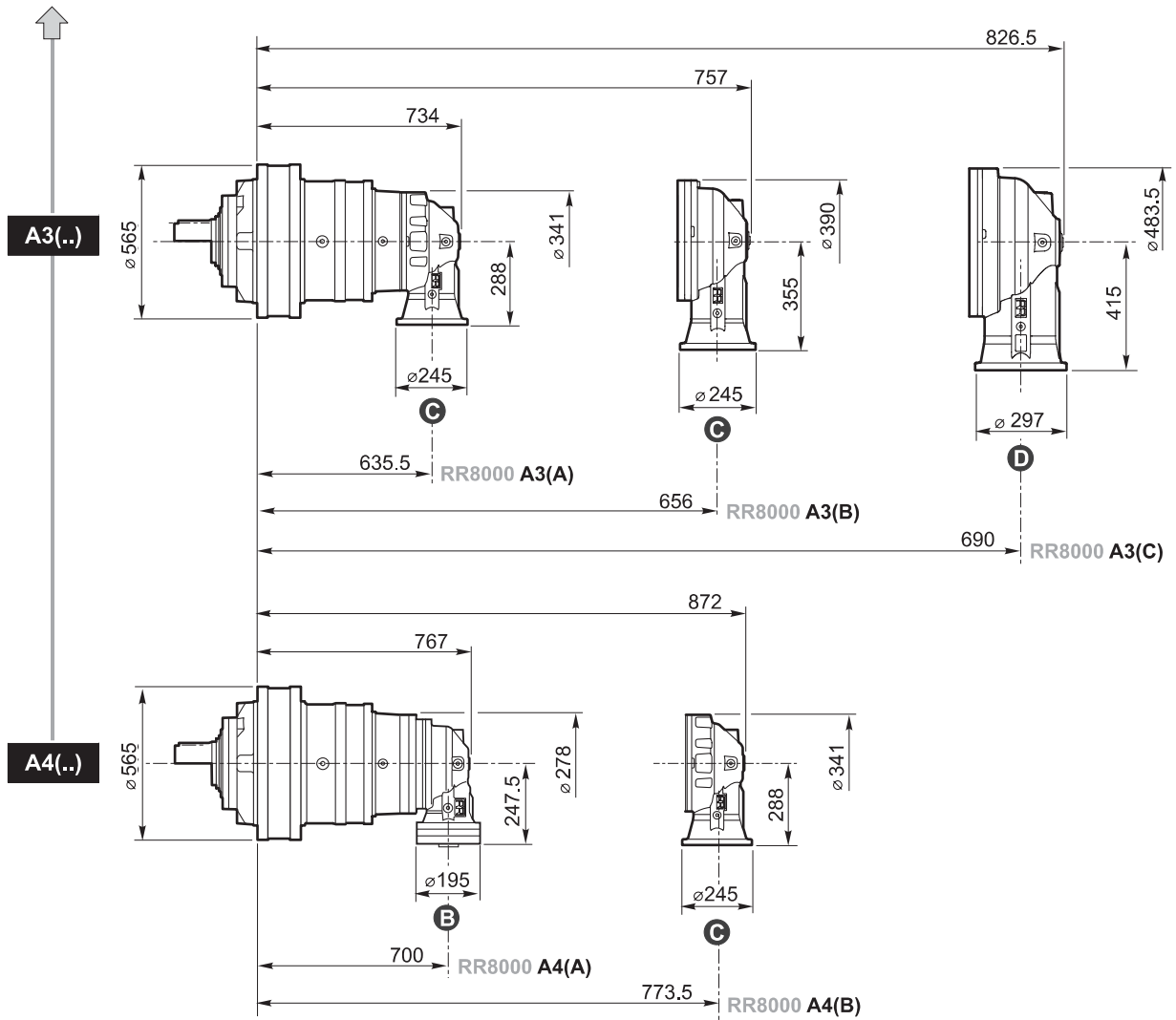


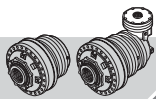
L4





RR8000 A.. .. i

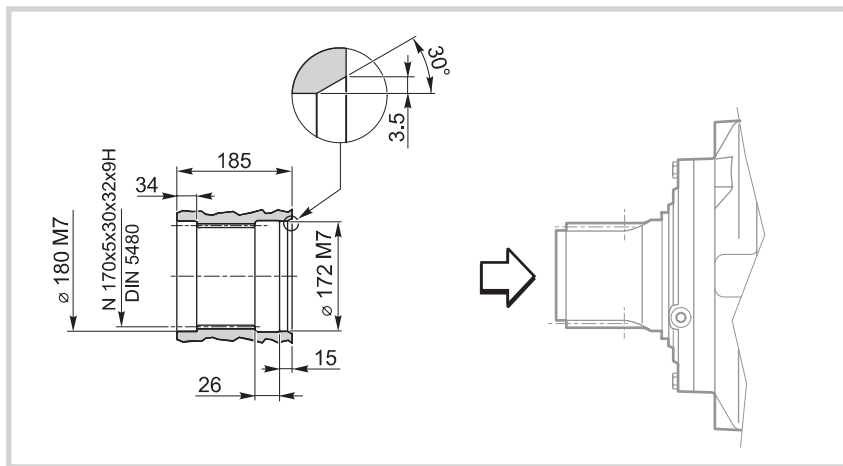
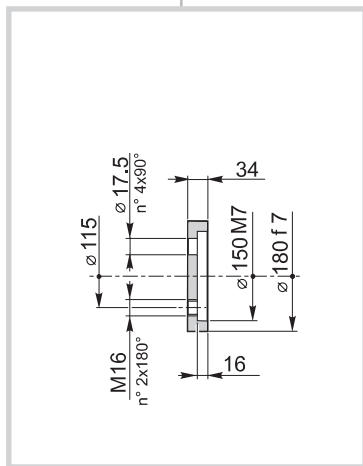
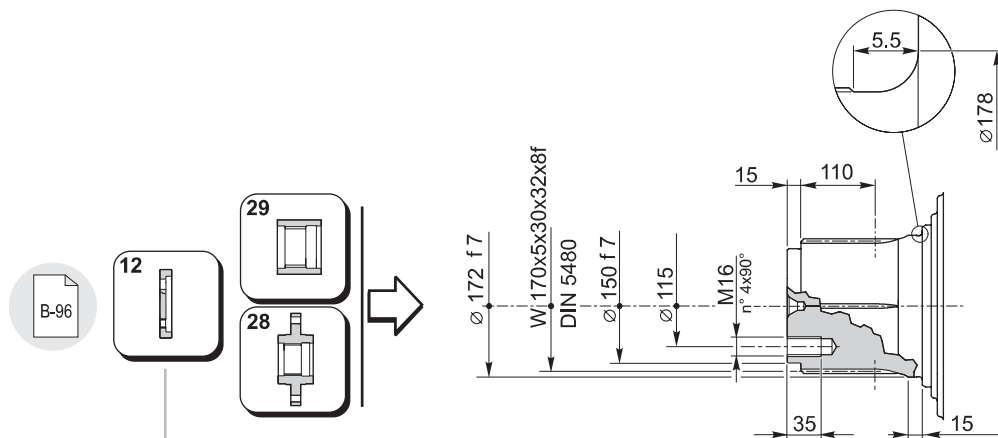
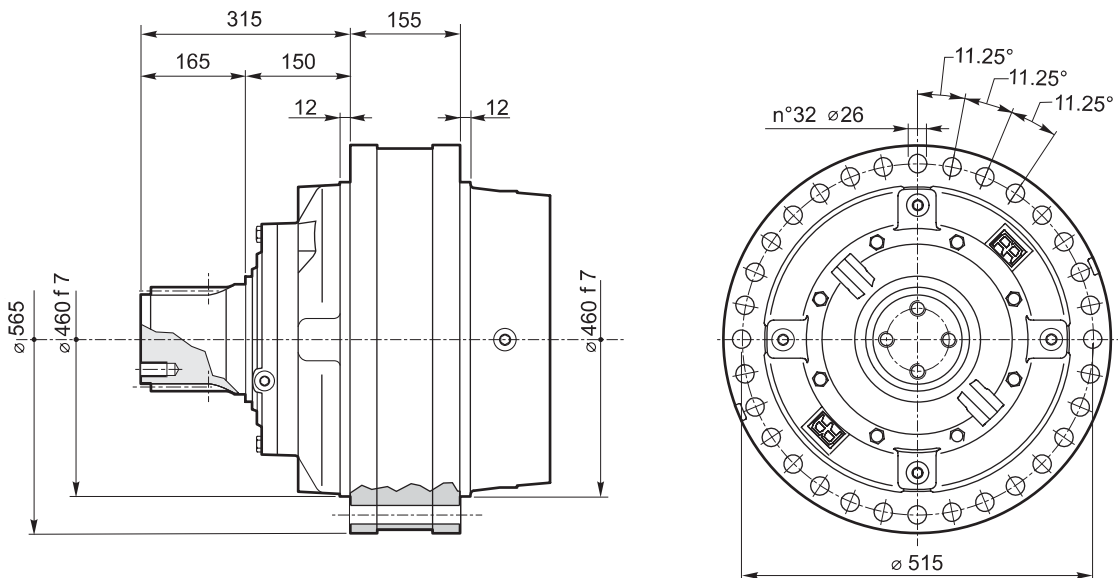


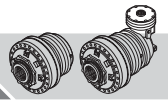


# RR8000

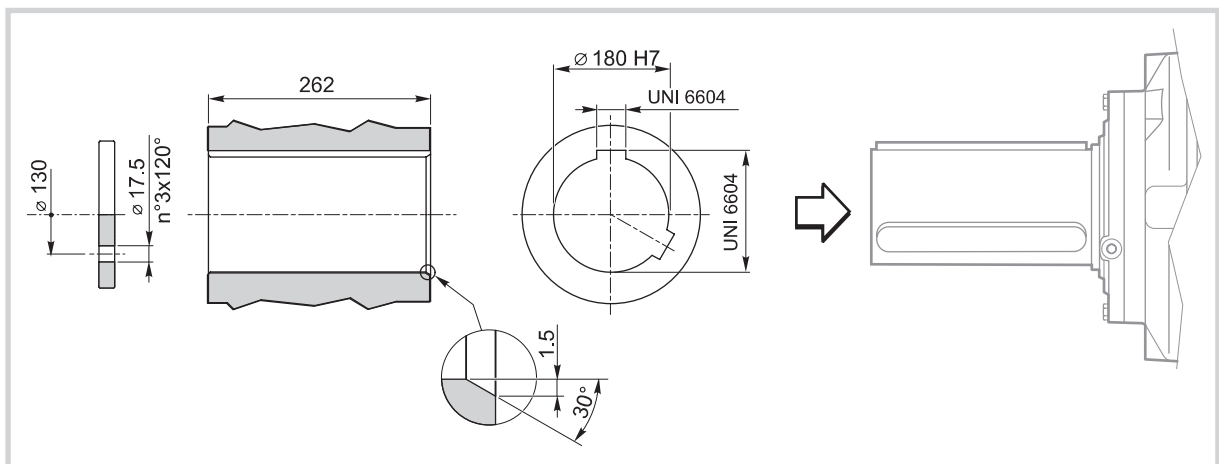
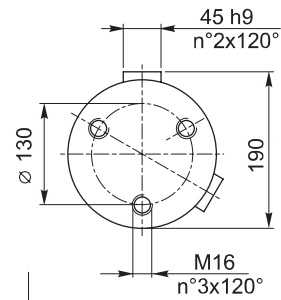
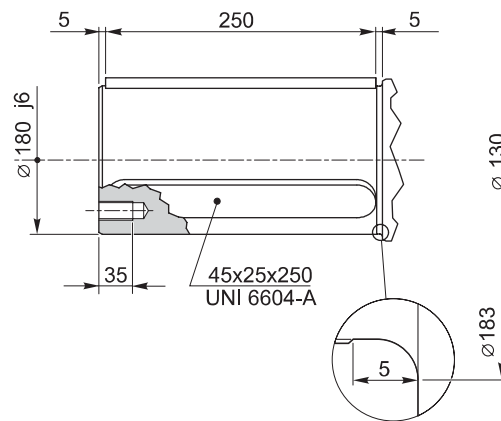
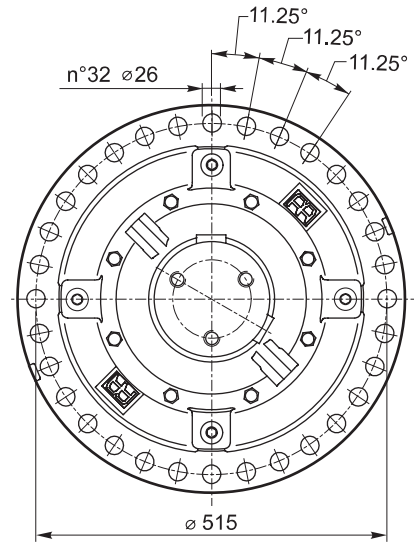
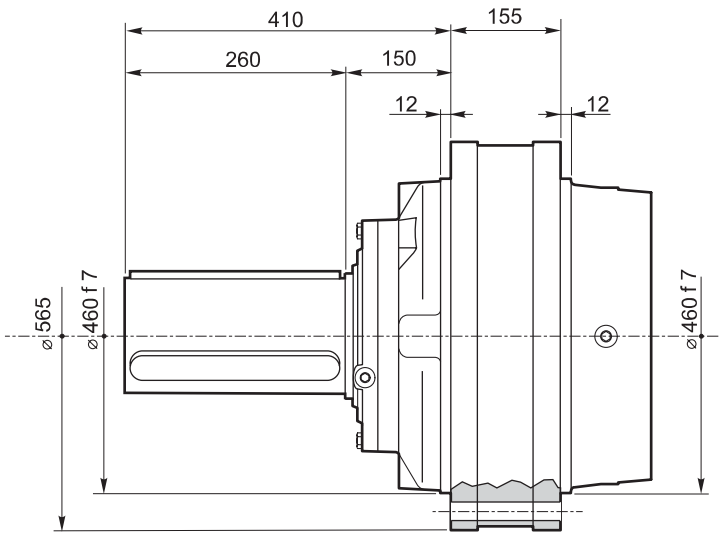
IT EN DE FR ES PT

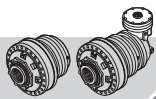
RR8000	L..	<b>MS</b>	i
RR8000	A..		i





RR8000	L..	<b>MC</b>	i
RR8000	A..		i

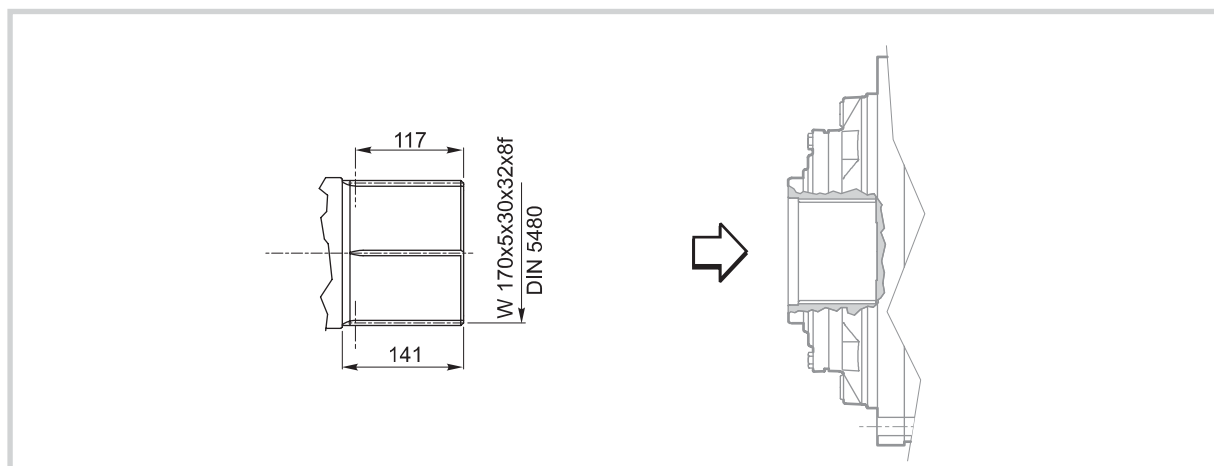
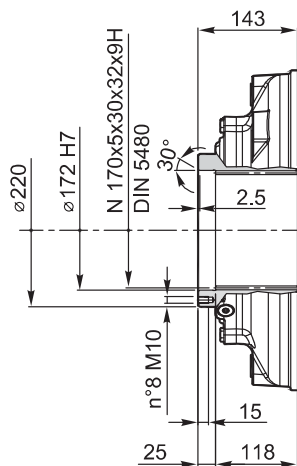
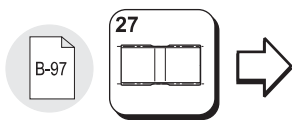
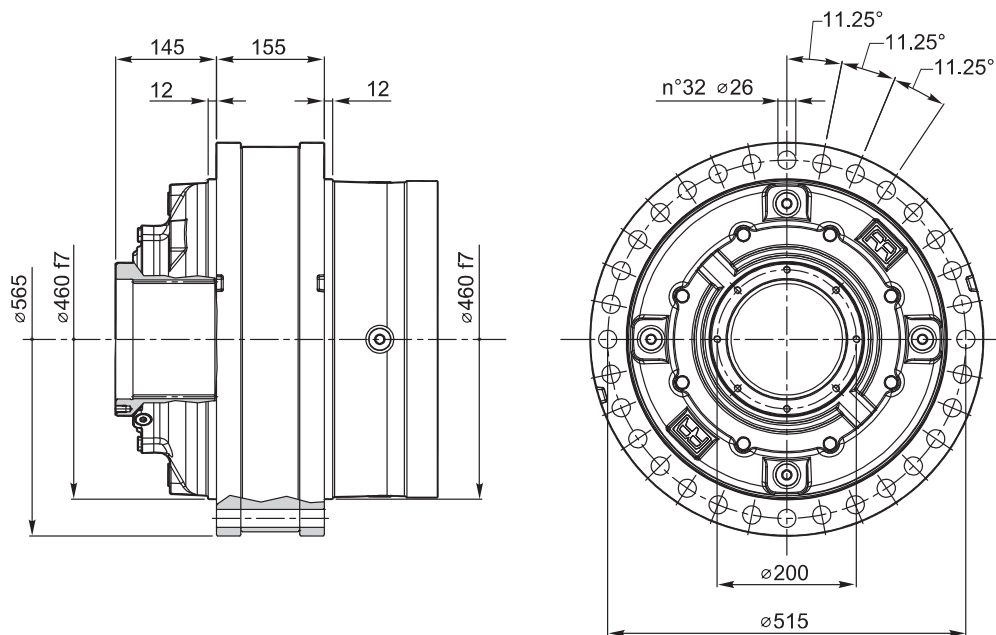


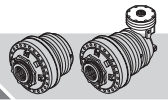


# RR8000

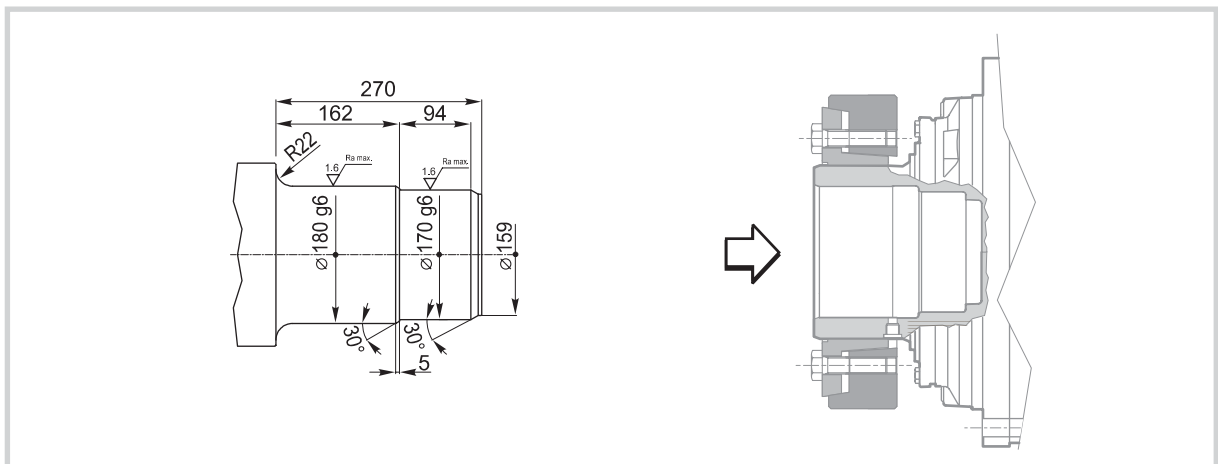
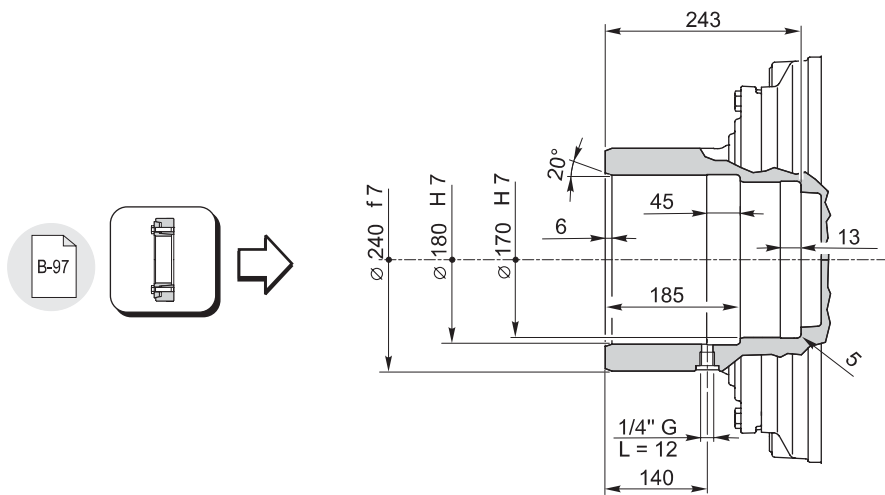
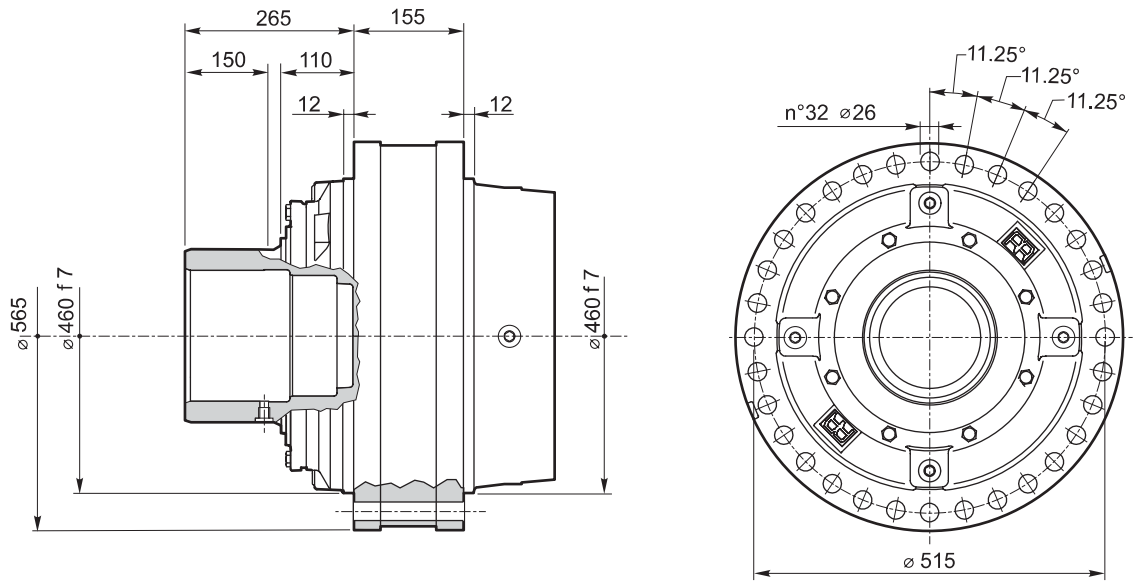
IT EN DE FR ES PT

RR8000	L..	<b>FS</b>	i
RR8000	A..		i





RR8000	L..	<b>MH</b>	i
RR8000	A..		i



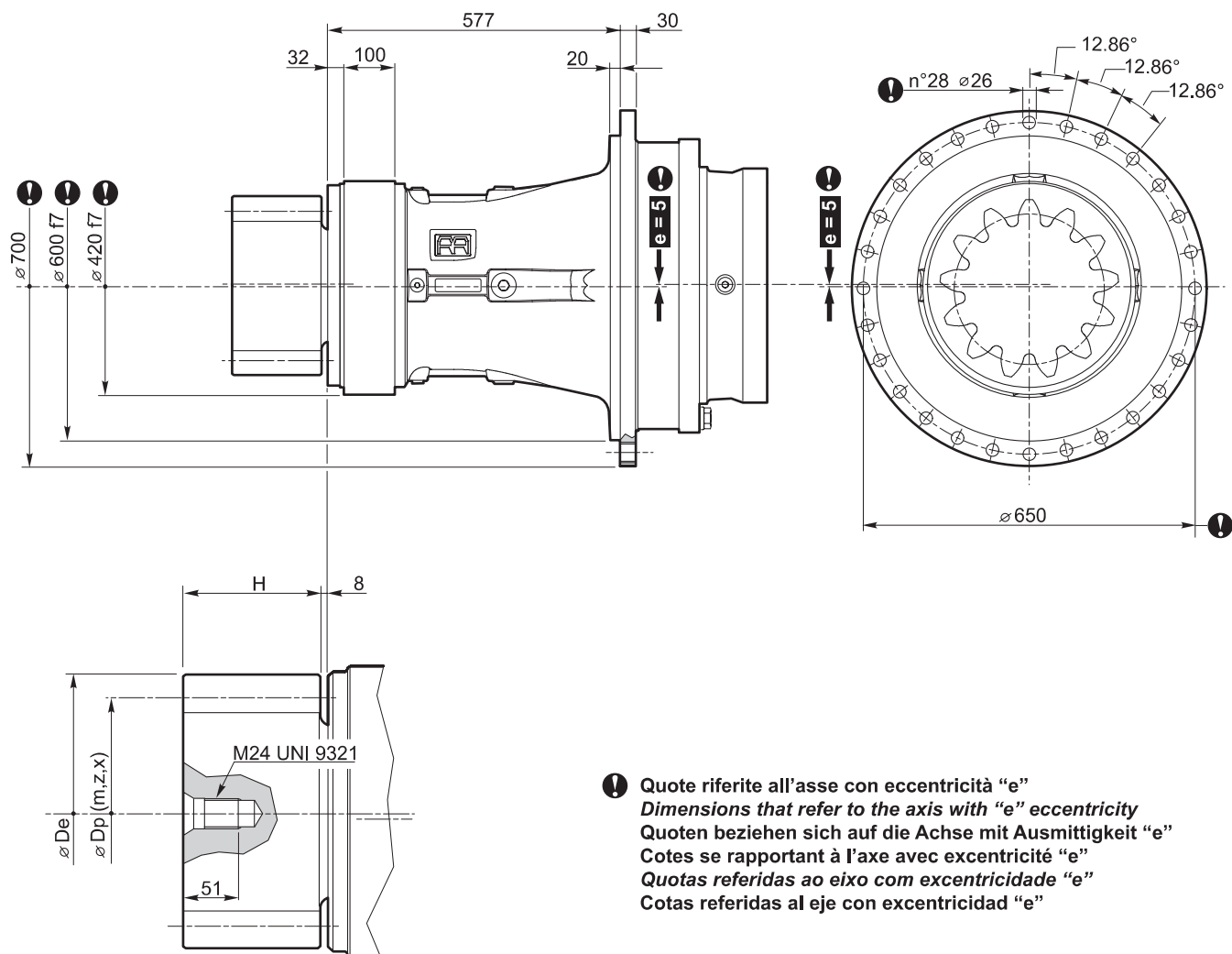




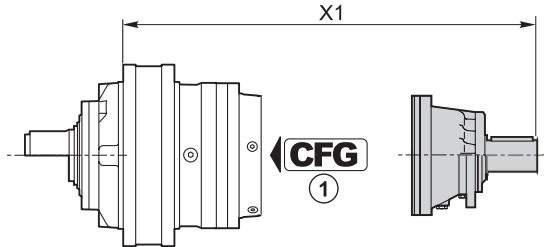
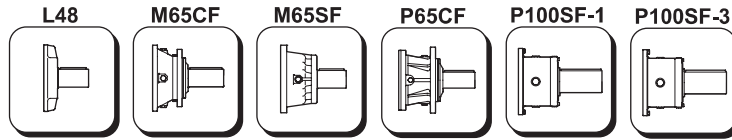
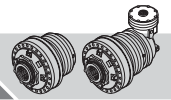
# RR8000

IT EN DE FR ES PT

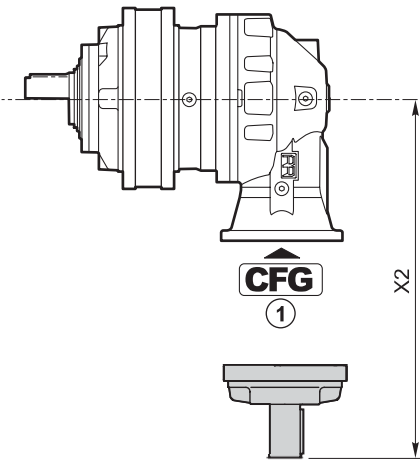
RR8000 L.. ZI i



	m	z	x	H	Dp	De	code
	20	15	0.5	200	300	360	03-639
	22	14	0.5	220	308	374	03-640
	24	14	0.5	220	336	408	03-641

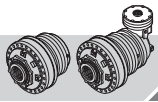


	<b>CFG</b> ①		code	X1
RR8000 L2	—	P100SF-3	154F3324	900
RR8000 L3	—	P65CF	154-2404	950
RR8000 L4	RF	M65SF	154B4249	898.5
	RF	M65CF	154-2407	921.5
	BOC	L48	154B3989	835.3



	<b>CFG</b> ①		code	X2
RR8000 A3(A)	—	P65CF	154-2404	600
RR8000 A3(B)	—	P65CF	154-2404	667
RR8000 A3(C)	—	P100SF-1	154F3322	791.5
RR8000 A4(A)	BOC	L48	154B3989	347.8
RR8000 A4(B)	—	P65CF	154-2404	600

<b>CFG</b>	
RF BOC	
<b>B</b> <b>C</b> <b>D</b>	



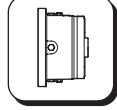
# RR8000

IT EN DE FR ES PT

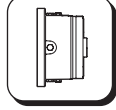
RF170-290



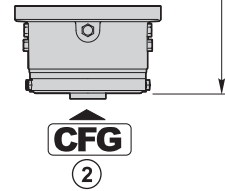
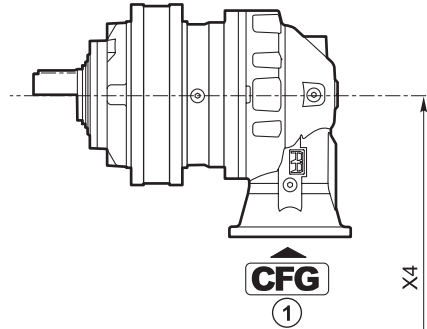
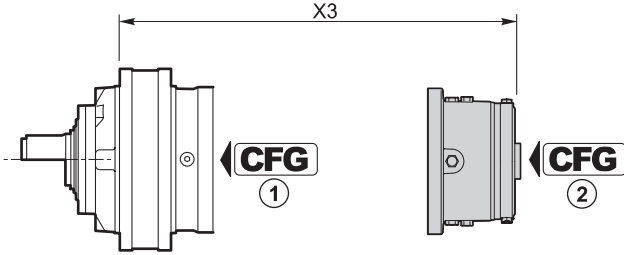
RF5/..



RFF5/..



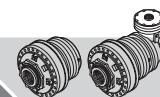
RF2/..



RF170-290	CFG ①	T <sub>f</sub> [Nm]	CFG ②		
			C		
			code	X3	X4
RR8000 L3	RF	1700	154B9766M2	835	—
		2000	154B9767M2		
		2300	154B9768M2		
		2900	154B9769M2		
RR8000 A3(A)	—	1700	154B9766M3	—	485
		2000	154B9767M3		
		2300	154B9768M3		
		2900	154B9769M3		
RR8000 A3(B)	—	1700	154B9766M3	—	552
		2000	154B9767M3		
		2300	154B9768M3		
		2900	154B9769M3		
RR8000 A4(B)	—	1700	154B9766M3	—	485
		2000	154B9767M3		
		2300	154B9768M3		
		2900	154B9769M3		

CFG	
RF BOC	C-3
B C D	C-3

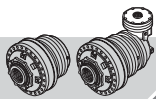
RF5/..	CFG ①	T <sub>f</sub> [Nm]	CFG ②						
			B			OMTS 12/24 z16	OMVS 10/20 z16		
			code	X3	X4	code	code	X3	X4
RR8000 L4	RF	210	154-2872	804.3	—	154-2879	154-2886	808	—
		290	154-2873			154-2880	154-2887		
		430	154-2874			154-2881	154-2888		
		650	154-2875			154-2882	154-2889		
		850	154-2876			154-2883	154-2890		
		1100	154-2877			154-2884	154-2891		
		1300	154-2878			154-2885	154-2892		



RFF5/..	CFG ①	T <sub>f</sub> [Nm]	CFG ②						
			B			OMTS 12/24 z16	OMVS 10/20 z16		
			code	X3	X4	code	code	X3	X4
RR8000 A4(A)	RF	210	154-2893	—	316.6	154-5338	154-5345	—	320.5
		290	154-2894			154-5339	154-5346		
		430	154-2895			154-5340	154-5347		
		650	154-2896			154-5341	154-5348		
		850	154-2897			154-5342	154-5349		
		1100	154-2898			154-5343	154-5350		
		1300	154-2899			154-5344	154-5351		

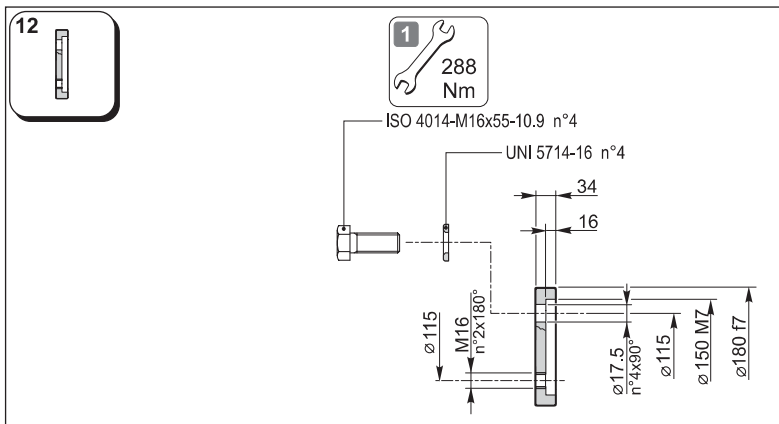
CFG	
RF	
B C D	

RF2/..	CFG ①	T <sub>f</sub> [Nm]	CFG ②								
			B			OMP/OMR SAE A 2B Ø 25	OMP/OMR SAE A 2B 1" 6B	OMP/OMR SAE A 4B Ø 25	OMP/OMR SAE A 4B 1" 6B		
			code	X3	X4	code	code	code	code	X3	X4
RR8000 L4	RF	70	154B9195	776.8	—	154B9195M10	—	154B9195M16	154B9195M17	766.8	—
		140	154B9196			154B9196M10	—	154B9196M16	154B9196M17		
		210	154B9197			154B9197M10	—	154B9197M16	154B9197M17		
		320	154B9198			154B9198M10	—	154B9198M16	154B9198M17		
		430	154B9199			154B9199M10	—	154B9199M16	154B9199M17		
		600	154B9200			154B9200M10	—	154B9200M16	154B9200M17		
RR8000 A4(A)	RF	70	154F2991	—	285.3						
		140	154F1890								
		210	154F2961								
		320	154B3591								
		430	154B3592								
		600	154F2992								



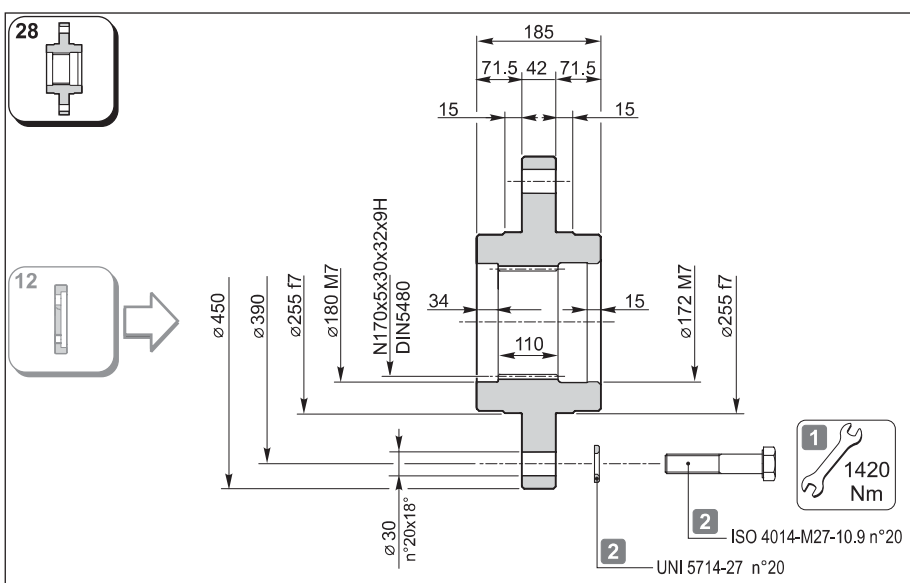
# RR8000

IT EN DE FR ES PT



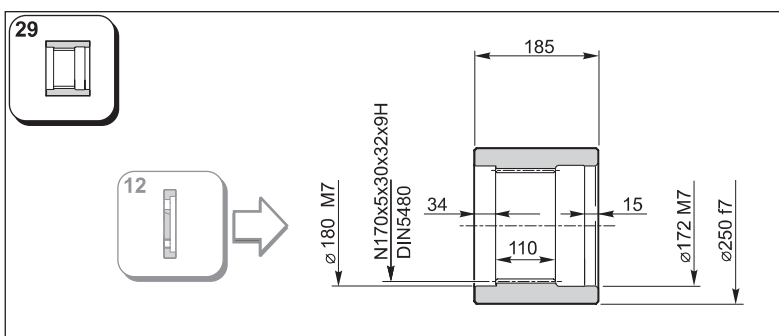
154F6034

Materiale / Material / Material / Matériau / Material / Material:  
 Acciaio / Steel / Stahl / Acier / Acero / Aço  
 EN 10083-1-42CrMo4+QT (1.7225)



154F6052

Materiale / Material / Material  
 Matériau / Material / Material  
 Acciaio / Steel / Stahl / Acier / Acero / Aço  
 EN 10083-1-C40 (1.1186)

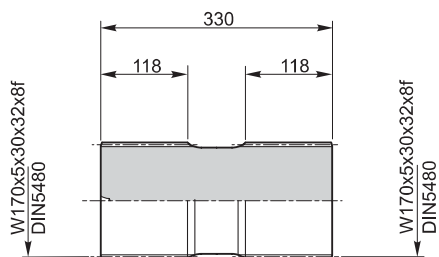
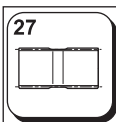
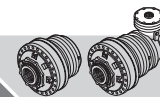


154F6060

Materiale / Materiale / Material / Matériau / Material / Material:  
 Acciaio / Steel / Stahl / Acier / Acero / Aço  
 EN 10083-1-42CrMo4+QT (1.7225)

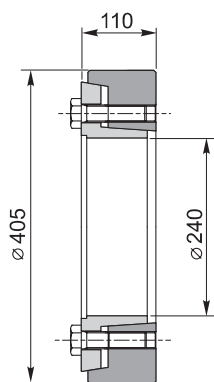
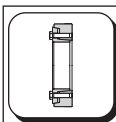
**1** Coefficiente d'attrito medio considerato: 0.14  
 Average friction coefficient considered: 0.14  
 Durchschnittlicher berücksichtigter Reibungskoeffizient: 0.14  
 Coefficient de frottement moyen considéré: 0.14  
 Coeficiente medio de fricción considerado: 0.14  
 Coeficiente de atrito médio considerado: 0.14

**2** Componenti non forniti da Reggiana Riduttori  
 Components not supplied by Reggiana Riduttori  
 Nicht von Reggiana Riduttori gelieferte Komponenten  
 Parties pas fournies par Reggiana Riduttori  
 Componentes no suministrados por Reggiana Riduttori  
 Componentes não fornecidos por Reggiana Riduttori

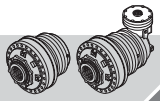


Materiale / Material / Material / Matériau / Material / Material:  
 Acciaio / Steel / Stahl / Acier / Acero / Aço  
 EN 10083-1-42CrMo4+QT (1.7225)

154F6040



154F6068



# RR8000

IT EN DE FR ES PT

