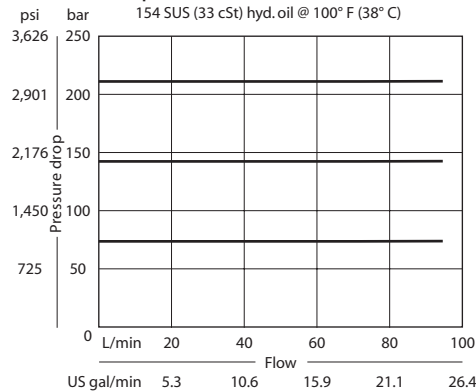


**OPERATION**

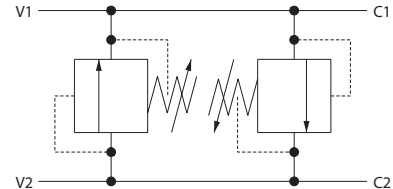
This valve is an inline cross relief. It uses two CP200-1 differential area relief valves.

**SPECIFICATIONS**

**Theoretical performance**



**Schematic**

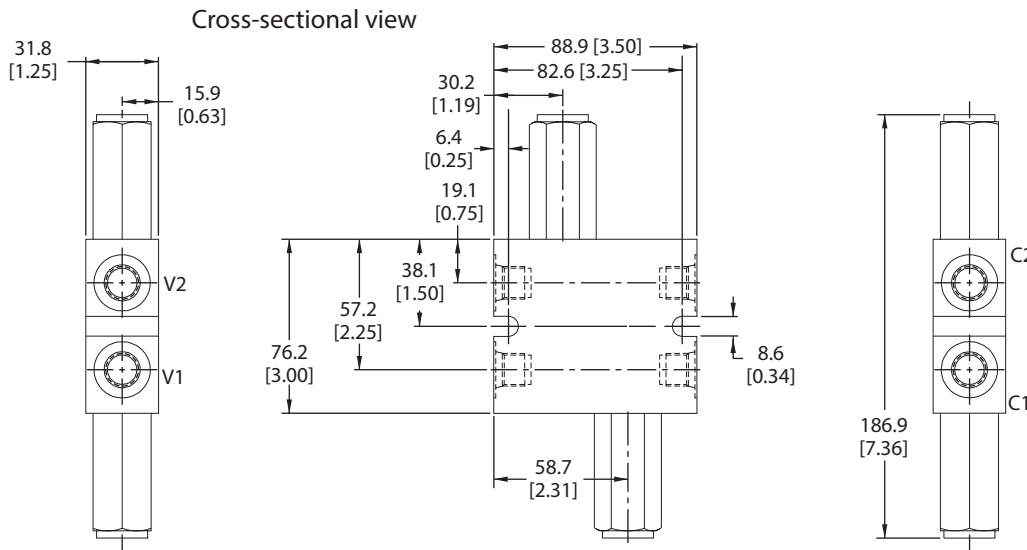


**Specifications**

<b>Rated pressure</b>	250 bar [3600 psi]
<b>Rated flow</b>	75 l/min [20 US gal/min]
<b>Weight</b>	0.82 kg [1.80 lb]
<b>Cavity</b>	none

**DIMENSIONS**

mm [in]



**ORDERING INFORMATION**

**CP220 - 1 - 8S - B - 0 - A - C - 150**

<b>Housing and ports</b>	<b>Housing P/N</b>	<b>Crack pressure</b>
3B = Al, 3/8 BSP	221743	Code x 10 = psi
4B = Al, 1/2 BSP	221744	Example: 150 = 1500 psi
6S = Al, #6 SAE	220216	
8S = Al, #8 SAE	220217	
Other housings available		
<b>Seals</b>	<b>Seal kit</b>	<b>Pressure range</b>
B = Buna-N	120072	A = 7-55 [100-800]
V = Viton	120161	Standard 28 [400]
		B = 17-138 [250-2000]
		Standard 69 [1000]
		C = 41-248 [600-3600]
		Standard 103 [1500]
<b>Adjustment option</b>		
A = Internal		
E = External		
F = Tamper resistant		
K = Knob		