

OPERATION

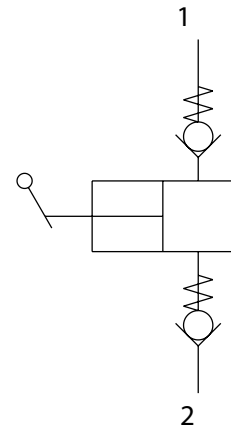
This is a manually operated uni-directional pump. These small displacement hand pumps are used typically for piloting the operation of small hydraulic cylinders or valves. These pumps can be mounted inline using the standard housing or in custom HICs. For smooth operation, inlet lines should not be excessively long, and the vertical distance between pump and tank level no more than 300 mm (12 inch).

These pumps can work in outdoor applications if the ambient air is not contaminated by powder and dust.

SPECIFICATIONS

Size		06
Displacement Per Stroke	cm³	0.94
	[in³]	[0.057]
Max. pressure	bar	315
	[psi]	[4569]
NCS Cavity		NCS06/2
Max tightening torque	Nm	40
	[lbf-in]	[354]
Weight	cartridge	kg [lb]
	cartridge with handle	kg [lb]
	with housing	kg [lb]
		0.254 [0.560]
		0.550 [1.213]
		0.854 [1.883]

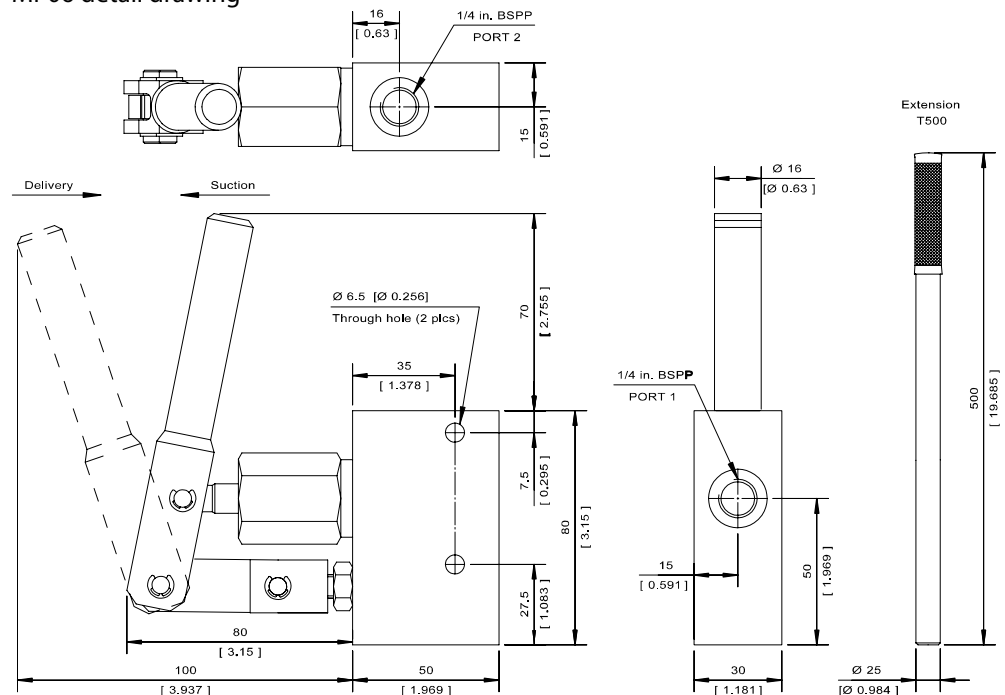
SCHEMATIC



DIMENSIONS

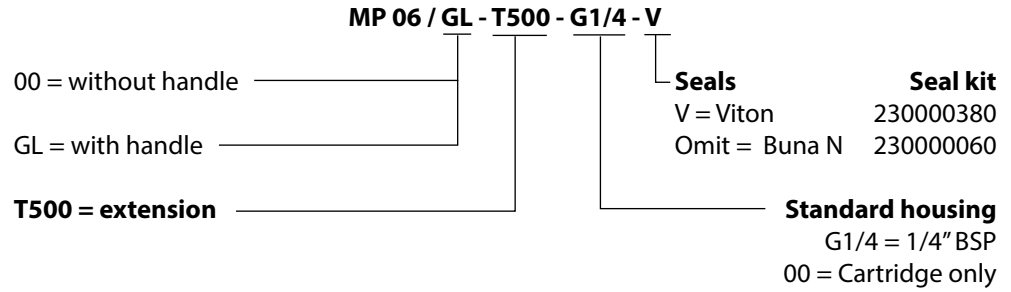
mm [in]

MP06 detail drawing



**ORDERING
 INFORMATION**

Example of designation MP 06



Housing Part #502500313